

# *Sanei Wireless LAN*

## *setting tool for Windows*

*User's guide*

**SM2-41W**

**SM3-21LW**

## Revision History

Rev No.	Date of Revision	Model	Revision details
Rev1.0E	2020/10/19	SM2-41W SM3-21LW	Newly released
Rev1.01E	2020/04/14	SM2-41W SM3-21LW	Support for WLAN Direct.

# Table of contents

1. Function overview .....	5
2. WIRELESS LAN setting method .....	6
3. IP Address setting confirmation .....	12
4. How to install the printer driver in Wireless LAN setting .....	13

# Introduction

Please read the following terms and conditions of use before operating the tool.

During operation, you are assumed to have agreed to the following terms and conditions of use.

If you do not agree to those, stop installing the software and delete all distributed files.

## Caution

- This software is owned by SANEI ELECTRIC INC. (hereafter SANEI), and SANEI holds the copyright and other related rights for the product.
- SANEI grants the right of use of the software to users so that they may use the products of SANEI in relation to the software.
- This software cannot be modified in any form in whole or in part.  
However, it can be copied or distributed as you desire.
- SANEI assumes no responsibility with the failure of software and software itself.
- SANEI assumes no responsibility with respect to possible direct or indirect loss or damage resulting from use of the software.
- SANEI may change the specifications of the software without prior permission from or notification of the user.

Sanei Electric Inc., Ltd. 2020

Unauthorized reproduction prohibited.

The contents of this document are subject to change without notice.

Windows is a trademark of Microsoft Corporation in the United States, Japan and other countries.

They are trademarks or registered trademarks, and they shall be used under license.

Other product names and company names are trademarks or registered trademarks of the respective companies.

# 1. Function overview

## 1-1. Function overview

This tool allows you to make various settings such as mode settings and IP address settings for wireless LAN communication. Please install the printer driver in advance as the setting will be done by it.

## 1-2. Operating environment

OS:

Microsoft Windows 7 (32bit/64bit) After SP1  
Microsoft Windows 8 (32bit/64bit)  
Microsoft Windows 10 (32bit/64bit)  
.NET Framework 4.0 or over install required

Interface:

USB (Printer class)

## 1-3. Restriction

To set the settings from this tool, change the memory switch setting of the printer to the following.

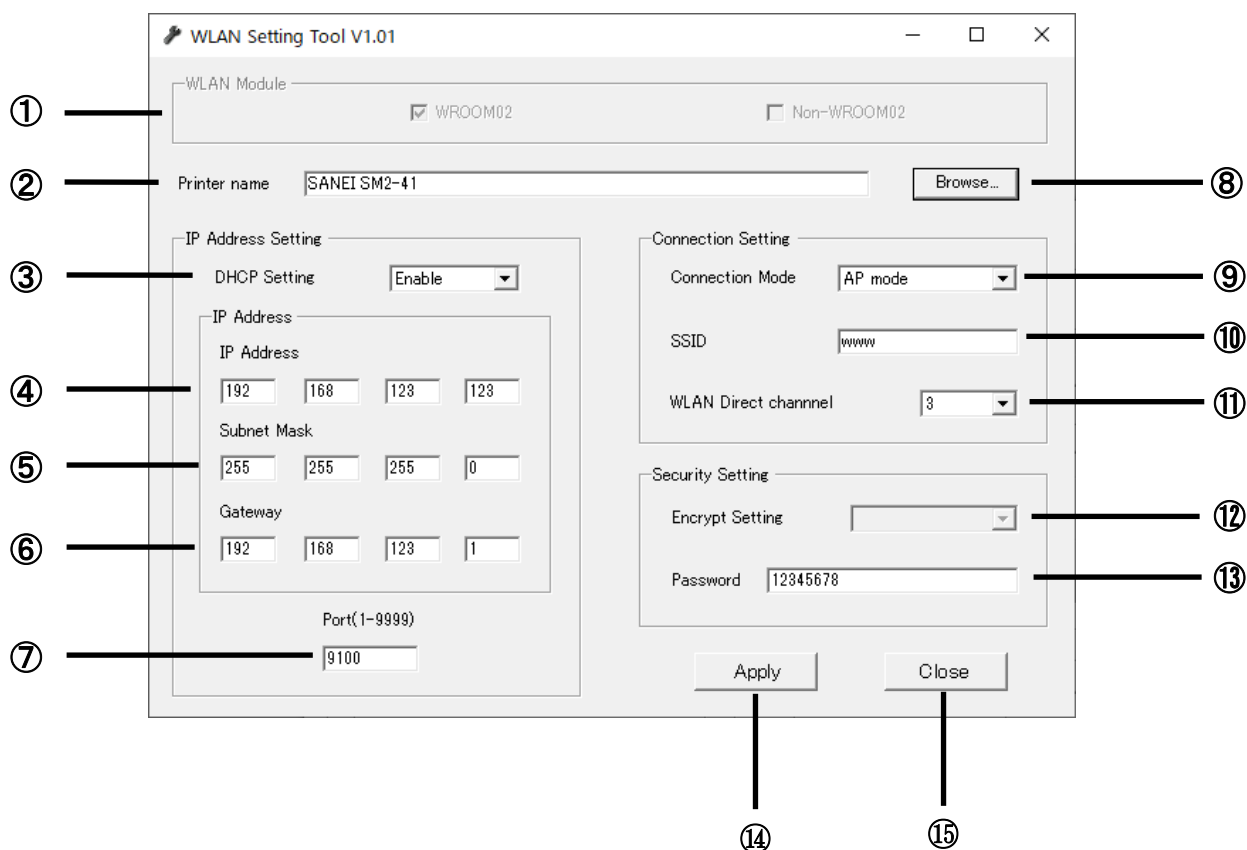
- 「ENABLE USB INTERFACE = YES」
- 「USB IN DEVICE MODE = YES」
- 「PROTOCOL MODE = Disabled」

Above items cannot be set by the tool as they are related to the communication between PC and printer.

## 2. WIRELESS LAN setting method

### 2-1. Main screen

Main screen in below will appear by executing "WLANsettingTool.exe".



#### ① Wireless LAN module

Select the wireless LAN module installed in the printer.

#### ② Printer name

Displays the name of the printer selected by the browse button.

#### ③ DHCP Setting

Specify "Enable" if using DHCP to set the IP address.

Specify "Disable" if using a fixed IP address.

#### ④ IP Address

Specify the IP Address (When DHCP is disabled)

**⑤ Subnet Mask**

Specify the Subnet mask (When DHCP is disabled)

**⑥ Gateway**

Specify the Gateway (When DHCP is disabled)

**⑦ Port**

Specify the port number for TCP/IP.

**⑧ Browse button**

Specify the printer name to be set.

After specified, the setting information stored in the printer will be read.

**⑨ Connection Mode**

Specifies how to connect the host and printer.

AP mode : The mode in which host is connected to the printer via a wireless router.

WLAN Direct mode : The mode in which host is directly connected to the printer.

**⑩ SSID**

Specify SSID name of the wireless router to be used for Wireless LAN communication.

In WLAN Direct mode, it is the SSID of the printer.

**⑪ WLAN Direct channel**

Specify the channel used in WLAN Direct mode.

**⑫ Encrypt Setting**

Specify the Wireless LAN encryption methods.

**⑬ Password**

Specify the password of the wireless router used for Wireless LAN communication.

In WLAN Direct mode, this is the printer password.

**⑭ Apply**

Write the setting information of Wireless LAN to the printer

**⑮ Close**

Close the setting tools.

## 2-2. Setting for Wireless LAN

APP mode is the mode in which connecting to host via a wireless router.  
Connect the PC to the wireless router in advance.

- 1) Connect the PC and the printer with USB cable
- 2) Turn on the printer
- 3) Execute “WLANSettingTool.exe” tool.
- 4) Select the type of wireless LAN module.

If you do not know the installed wireless LAN module, perform a test print and check “WiFi Frm. Ver”.

```
TCP Port:          9100
MAC Address:       86F3EB6DBC3C
WiFi Frm.Ver.:    1.7.0.0
WiFi Mode:        IBSS (Router)
WiFi IBBS Ch:     3
WiFi SSID:        SM2-41TEST
IrDA baud rate:   19200 bps
```

If it is 1.7.0.0 or later → Select WROOM02.

If it was 1.4 or earlier → Select Non-WROOM02.

WLAN Setting Tool V1.01

WLAN Module

☒ WROOM02 ☐ Non-WROOM02

Printer name

IP Address Setting

DHCP Setting

IP Address

IP Address

Subnet Mask

Gateway

Port(1-9999)

Connection Setting

Connection Mode

SSID

WLAN Direct channel

Security Setting

Encrypt Setting

Password



5) Click “Browse” button and specify the printer name.

WLAN Setting Tool V1.01

WLAN Module: ☒ WROOM02 ☐ Non-WROOM02

Printer name:

IP Address Setting

DHCP Setting:

IP Address:

Subnet Mask:

Gateway:

Port(1-9999):

Connection Setting

Connection Mode:

SSID:

WLAN Direct channel:

Security Setting

Encrypt Setting:

Password:

6) Select a connection mode.

For models that do not support WLAN Direct, it cannot be selected because it is exclusively for AP mode.

WLAN Setting Tool V1.01

WLAN Module: ☒ WROOM02 ☐ Non-WROOM02

Printer name:

IP Address Setting

DHCP Setting:

IP Address:

Subnet Mask:

Gateway:

Port(1-9999):

Connection Setting

Connection Mode:

SSID:

WLAN Direct channel:

Security Setting

Encrypt Setting:

Password:

- 7) If the connection mode is "AP mode", specify the SSID and security settings according to the wireless router setting information.

If the connection mode is "WLAN Direct mode", specify the SSID and security settings you want to set for the printer.

When setting the password in "WLAN Direct mode", use 8 characters or more.

If it is less than 8 characters, the password will not be set.

WLAN Setting Tool V1.01

WLAN Module: ☒ WROOM02 ☐ Non-WROOM02

Printer name: SANEI SM2-41

IP Address Setting

DHCP Setting:

IP Address

IP Address: 192 168 123 123

Subnet Mask: 255 255 255 0

Gateway: 192 168 123 1

Port(1-9999): 9100

Connection Setting

Connection Mode:

SSID: www

WLAN Direct channel: 3

Security Setting

Encrypt Setting:

Password: 12345678

- 8) Specify the setting information for IP address

Use "DHCP Setting" when the wireless router to set up as random.

To set a fixed address, set "DHCP Setting" to "Disable" and specify the setting for each "IP Address", "Subnet Mask", "Gateway".

WLAN Setting Tool V1.01

WLAN Module: ☒ WROOM02 ☐ Non-WROOM02

Printer name: SANEI SM2-41

IP Address Setting

DHCP Setting:

IP Address

IP Address: 192 168 123 123

Subnet Mask: 255 255 255 0

Gateway: 192 168 123 1

Port(1-9999): 9100

Connection Setting

Connection Mode:

SSID: www

WLAN Direct channel: 3

Security Setting

Encrypt Setting:

Password: 12345678

9). Click “Apply” button. A BEEP sounds from the printer when change has been reflected.

WLAN Setting Tool V1.01

WLAN Module: ☒ WROOM02 ☐ Non-WROOM02

Printer name: SANEI SM2-41

IP Address Setting

DHCP Setting:

IP Address

192 168 123 123

Subnet Mask

255 255 255 0

Gateway

192 168 123 1

Port(1-9999)

9100

Connection Setting

Connection Mode:

SSID: jwww

WLAN Direct channel: 3

Security Setting

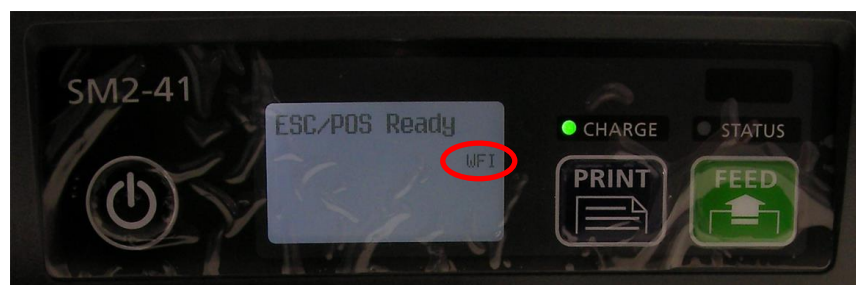
Encrypt Setting:

Password: 12345678

10) Turn on the printer again.

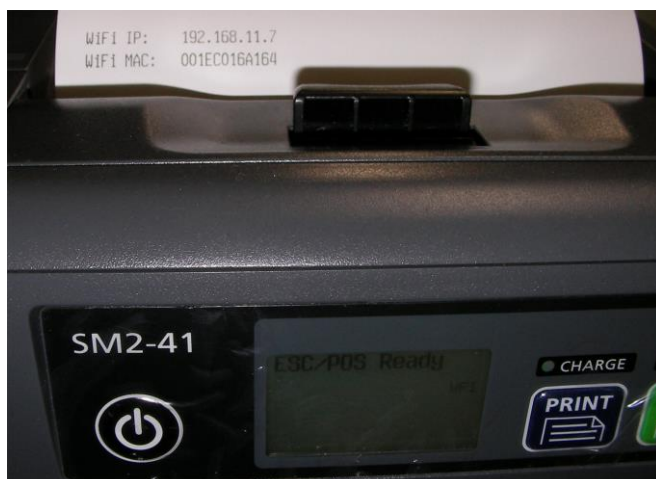
A BEEP sound will be heard when a connection between the wireless router and the printer is established.

For SM2-41W, “WFI” is displayed on the LCD screen as in below.



### 3. IP Address setting confirmation

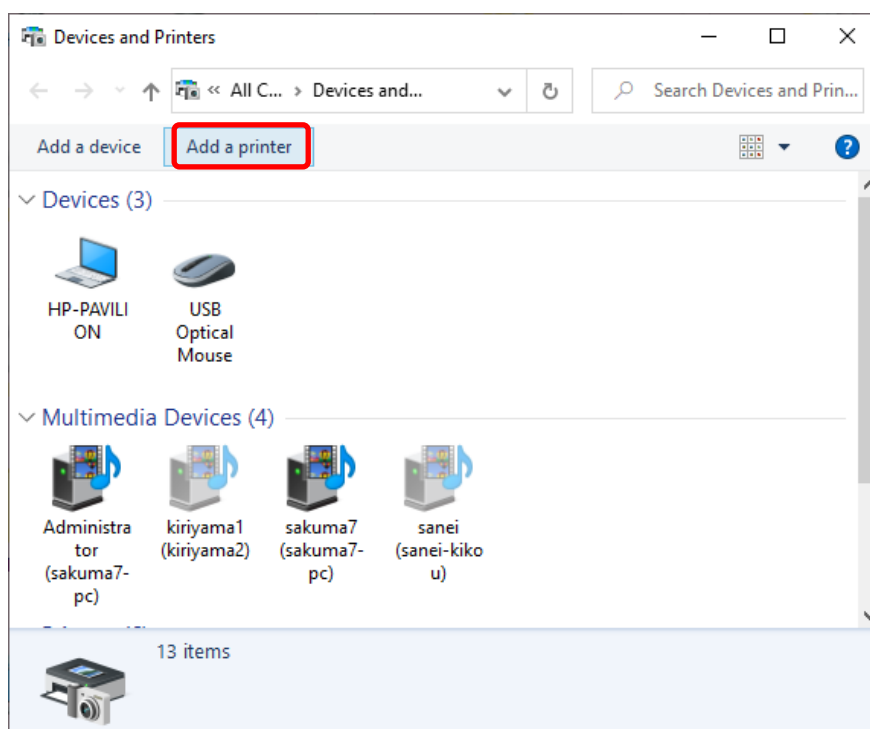
IP address and MAC address of the printer will be shown as in below by pressing power button and FEED button at same time when the printer is turned on.



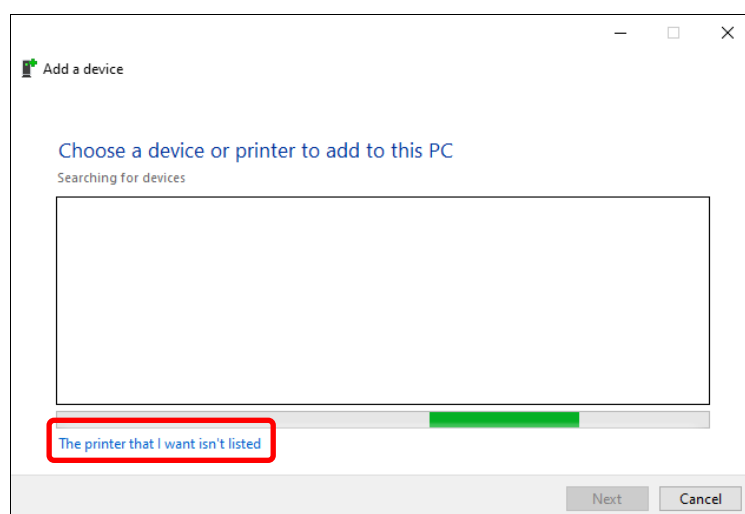
## 4. How to install the printer driver in Wireless LAN setting

Below is the procedure of how to install the printer driver for Wireless LAN communication. This section explains how to install the printer driver using Windows 10 as an example.

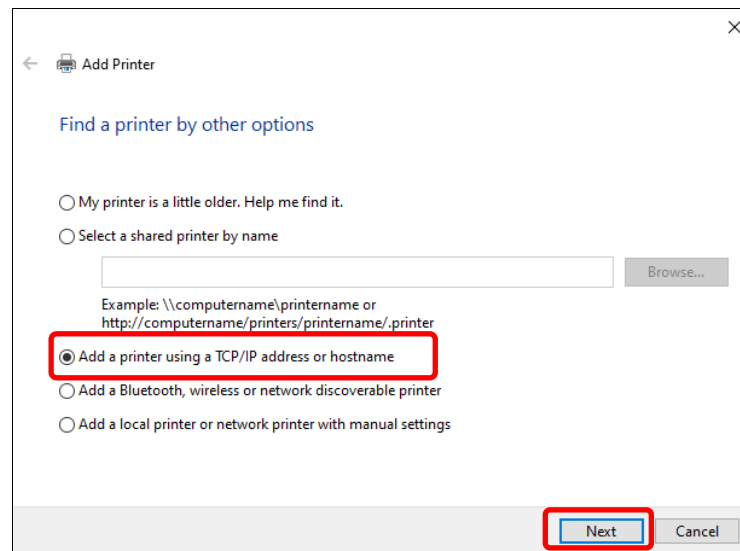
- 1) Open “Device and printers “ screen.
- 2) Click ” Add a printer” .



- 3) Click “The printer that I want isn't listed” .

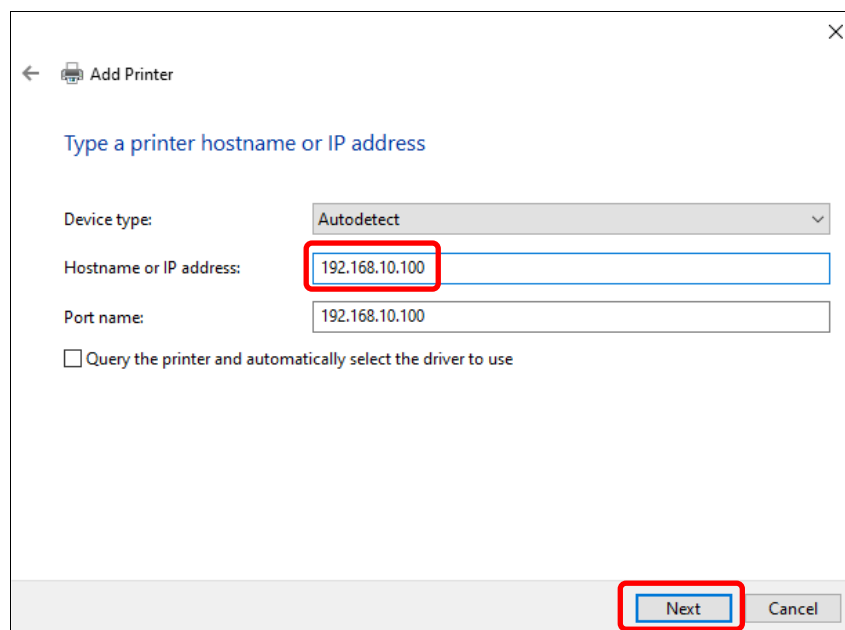


4) Check "Add a printer using a TCP/IP address or hostname" and then click "Next".

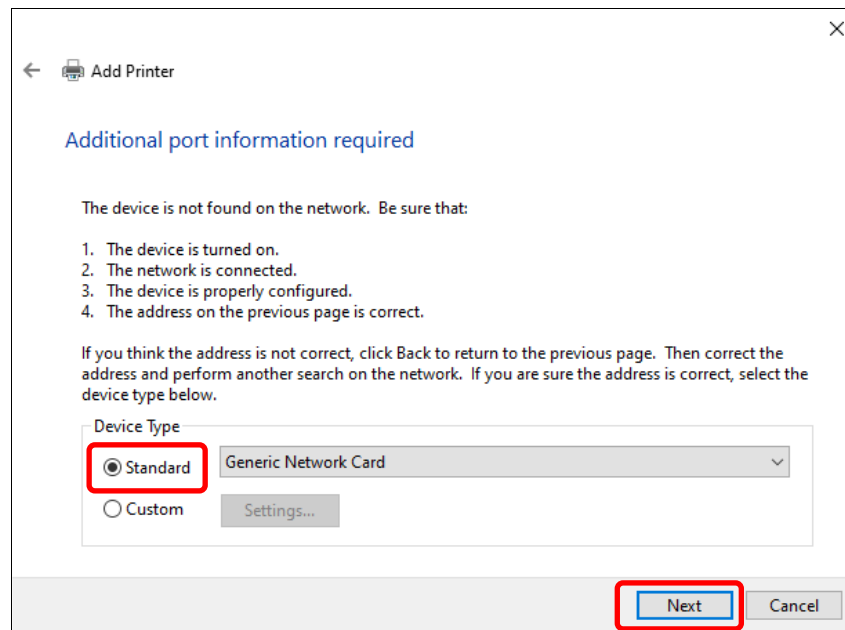


5) Set IP address of the printer in "Host name or IP address".

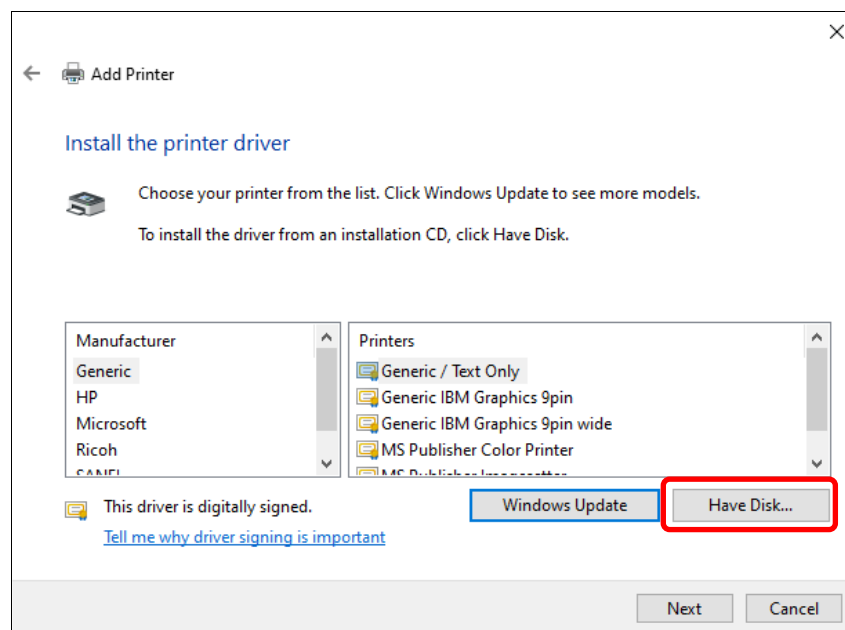
If DHCP is enabled, set IP address which confirmed in previous chapter "3. IP Address setting confirmation".



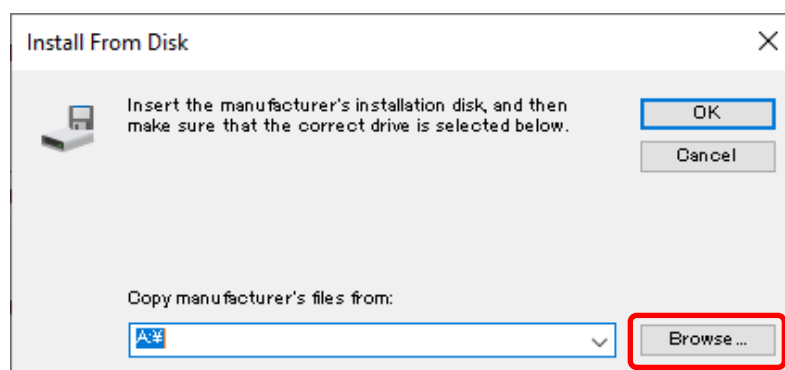
6) Specify “Standard” by device type and then click “Next” .



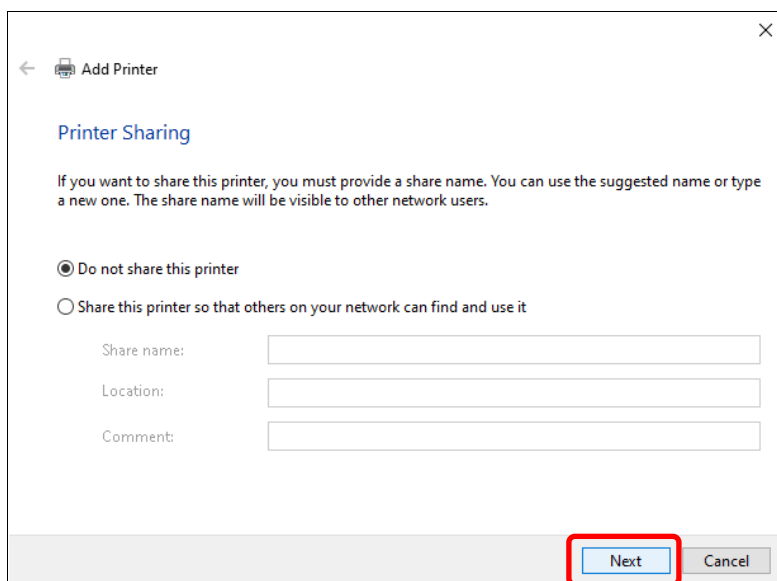
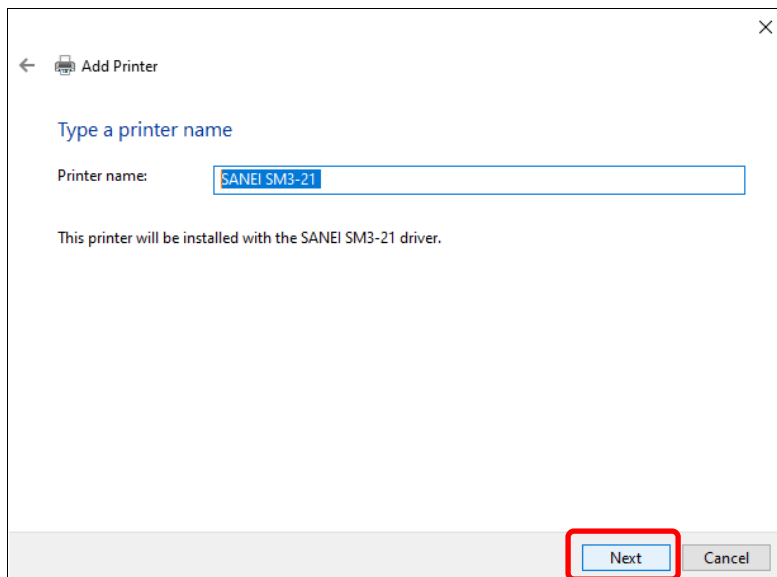
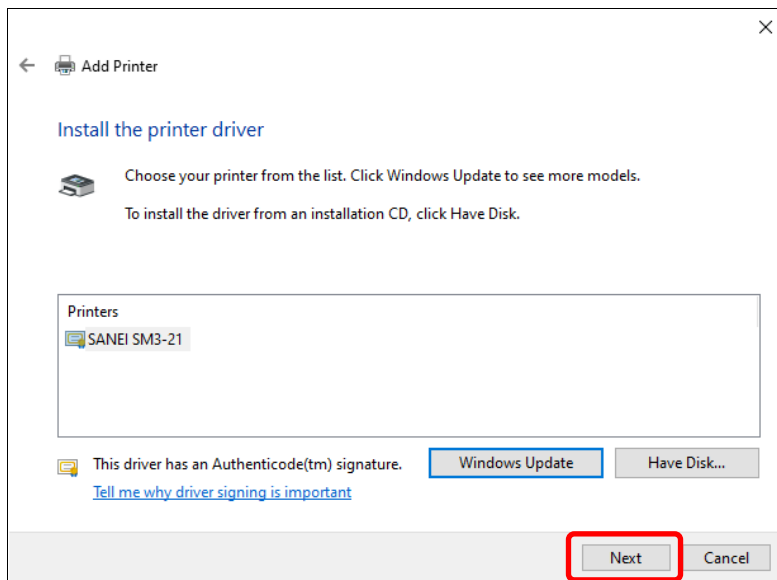
7) Click ” Have Disk...” .



8) Click “Browse..” to specify a folder of the printer driver.



9) From then, click “Next” until reaching completion.





10) Click “Finish” .

