

Sanei Virtual Com Driver Installation Manual

Table of contents

I .Introduction	3
II .Installation of driver (Windows XP)	4
III .Installation of driver (Windows 7/8/10/11)	8
IV .Confirmation of printer port	1 4
V . Revision records	1 5

I .Introduction

Please read the following terms and conditions of use before installing the software.
During installation, you are assumed to have agreed to the following terms and conditions of use.
If you do not agree to those, stop installing the software and delete all distributed files.
Although I created to make doubly sure about the contents of this book, please connect,
if there should be a point with an error and mind.

• Terms and conditions

This printer driver is owned by SANEI ELECTRIC INC. (hereafter SANEI), and SANEI holds the copyright and other related rights for the product.

SANEI grants the right of use of the printer driver to users so that they may use the products of SANEI in relation to the printer driver.

This printer driver cannot be modified in any form in whole or in part. However, it can be copied or distributed as you desire.

SANEI assumes no responsibility with the failure of printer driver and printer driver it self.

SANEI assumes no responsibility with respect to possible direct or indirect loss or damage resulting from use of the printer driver.

SANEI may change the specifications of the printer driver without prior permission from or notification of the user.

※ Microsoft Windows is a registered trademark of the Microsoft Corporation in the United States.

• Operating environment

1. Operating systems: Microsoft Windows XP (32bit)
 Windows 7 (32bit/64bit)
 Windows 8 (32bit/64bit)
 Windows 10 (32bit/64bit)
 Windows 11 (32bit/64bit)

2. Applicable Interface: USB

3. Printer Function setting

The following model should check that the items of a memory switch or DIP switch are the following setup.

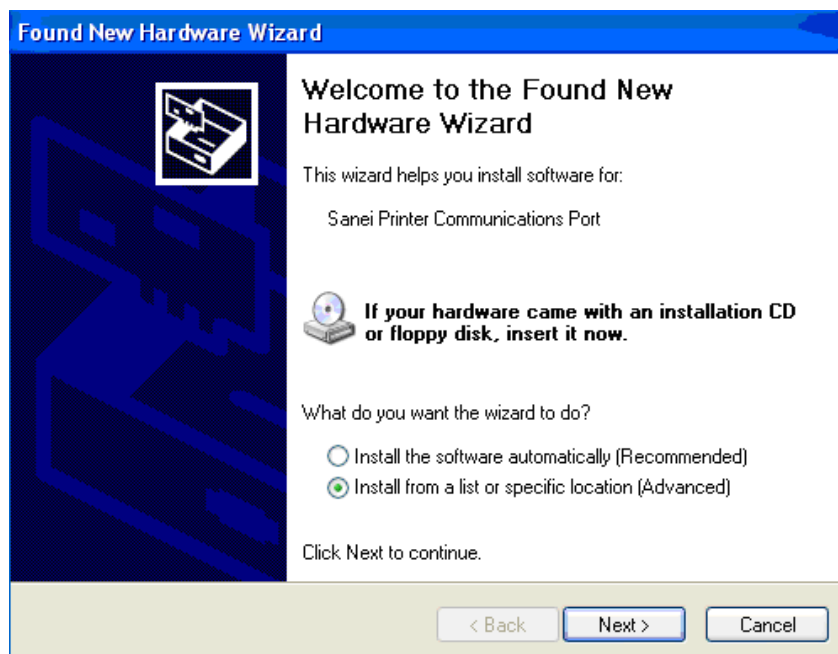
- In the SK1,SK4,SP1-21S,SP2-21S,BL2-58U,SP3-21 printer, set a software memory setting as below.
 - * OFF LINE BUSY = OFF
 - * USB DEVICE CLASS = COMMUNICATION
 - In the SD3-21/22,SM4-21/31 printer, set a software memory setting as below.
 - * OFF LINE BUSY = OFF
 - * USB DEVICE CLASS = SERIAL
 - In the BLM-80,SM1-21,SM2-41,SM3-21 printer, set a software memory setting as below.
 - * USB DEVICE CLASS = SERIAL
- (How to operate setting is to be referred to the Technical Manual.)

II .Installation of driver (Windows XP)

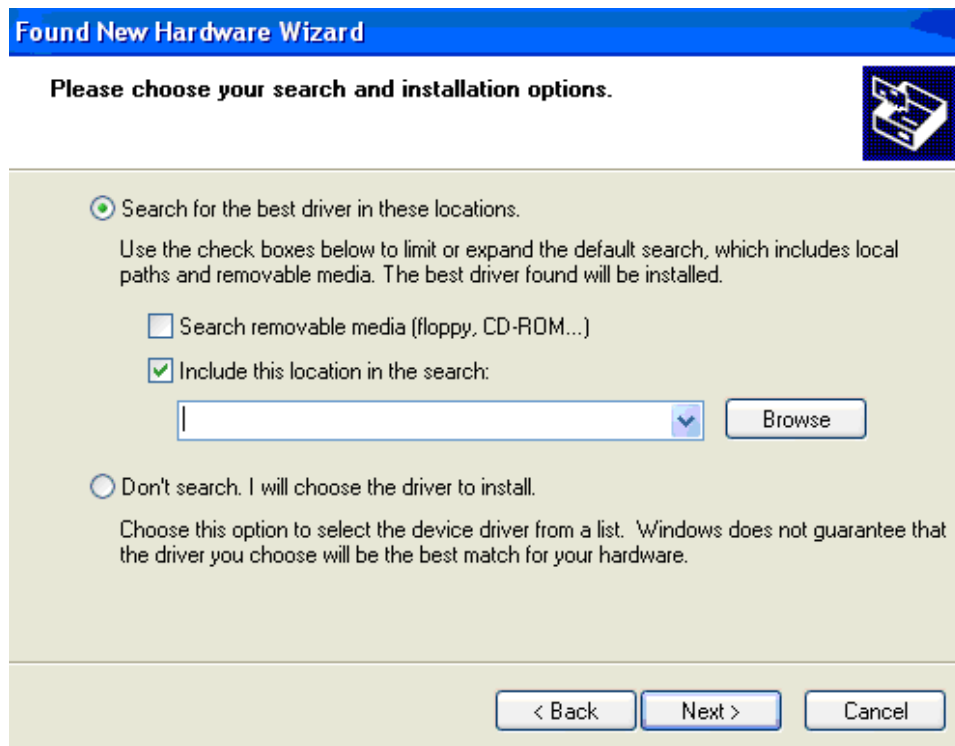
- 2-1. Power on Printer, and then plug Printer cable into USB port.
- 2-2. The installation wizard gets activated, and then Select “No, not this time” and click on the “NEXT” button. (In case this screen shown as below is displayed)



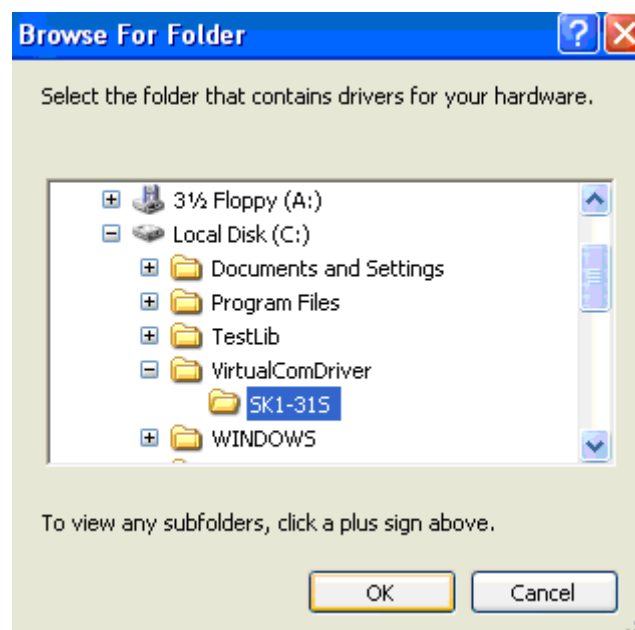
- 2-3. Select “Install from a list or specific location(Advanced)”, and click the “Next” button to continue.



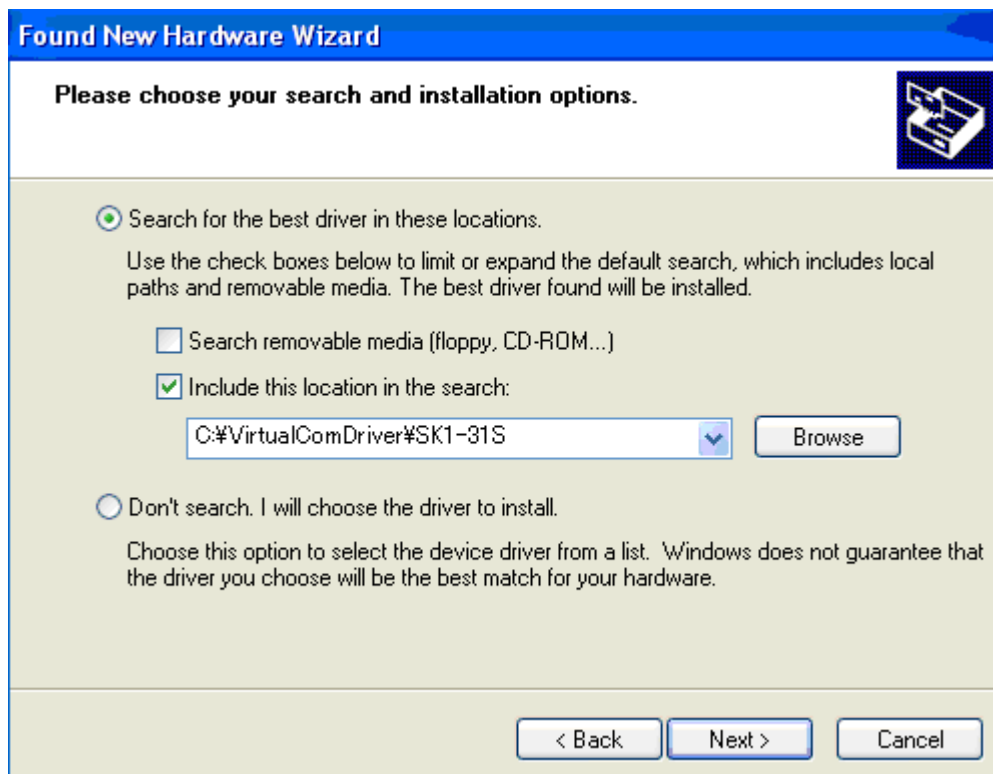
- 2-4. Select “Search for the best driver in these locations” and check “include this location in the search”. Then click “Browse”.



- 2-5. Select the folder containing the file “SaneiVirtualComDriver.inf”, and click “OK” to proceed.



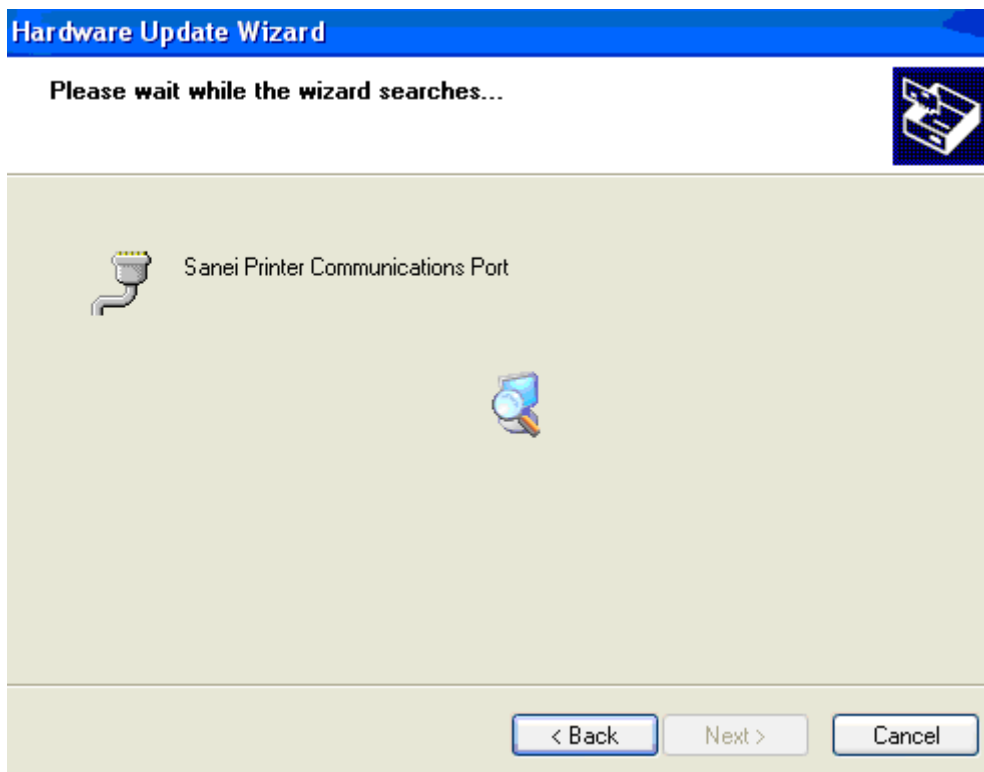
2-6. Click the “Next” button



2-7. In case the message dialogue shown as below is displayed, click on “Continue Anyway”.



- 2-8. The wizard box shown below will be displayed as the wizard starts to install the software. Please wait for a while.



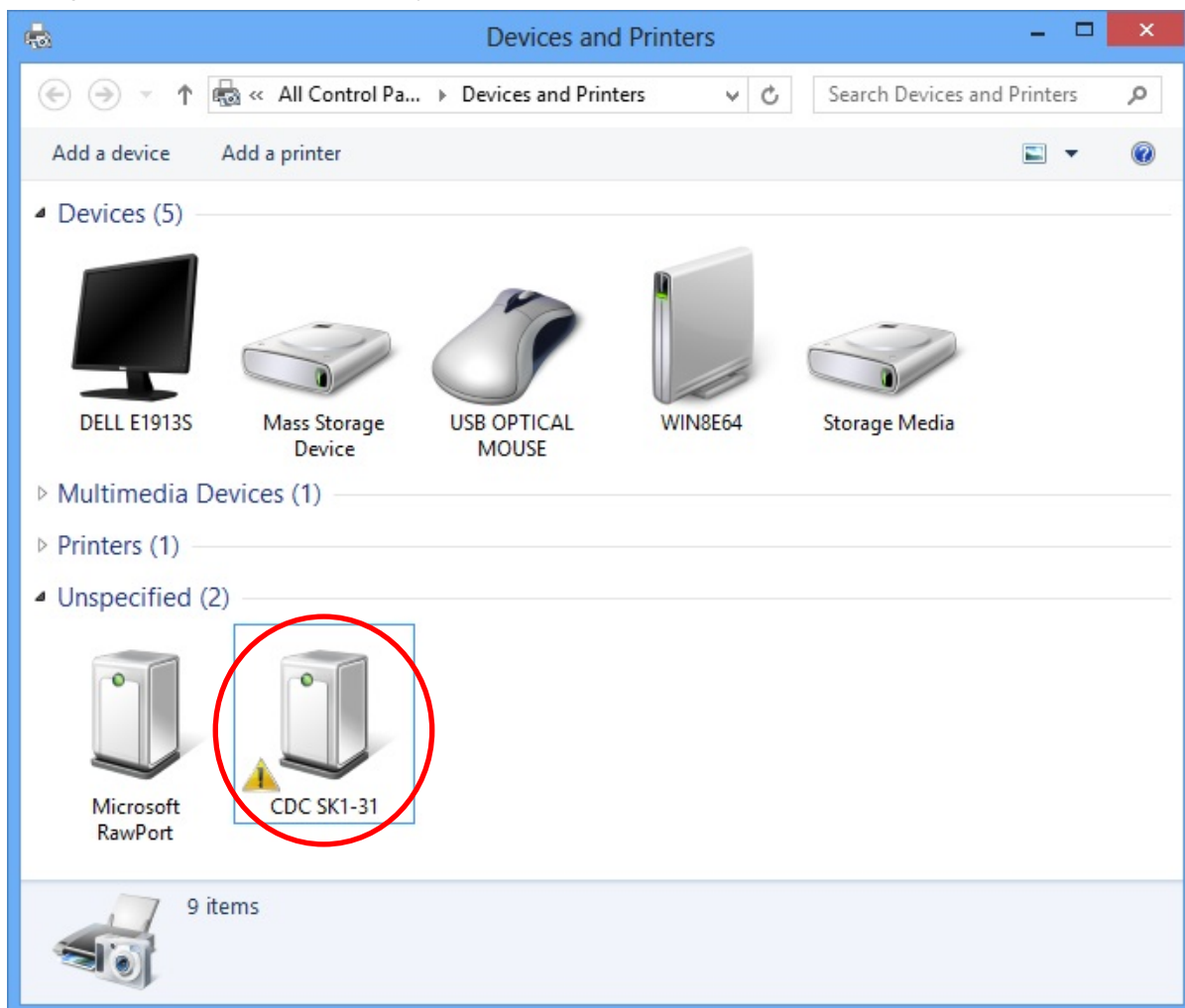
- 2-9. The wizard box is shown as below. Then, click "Finish" to complete the installation.



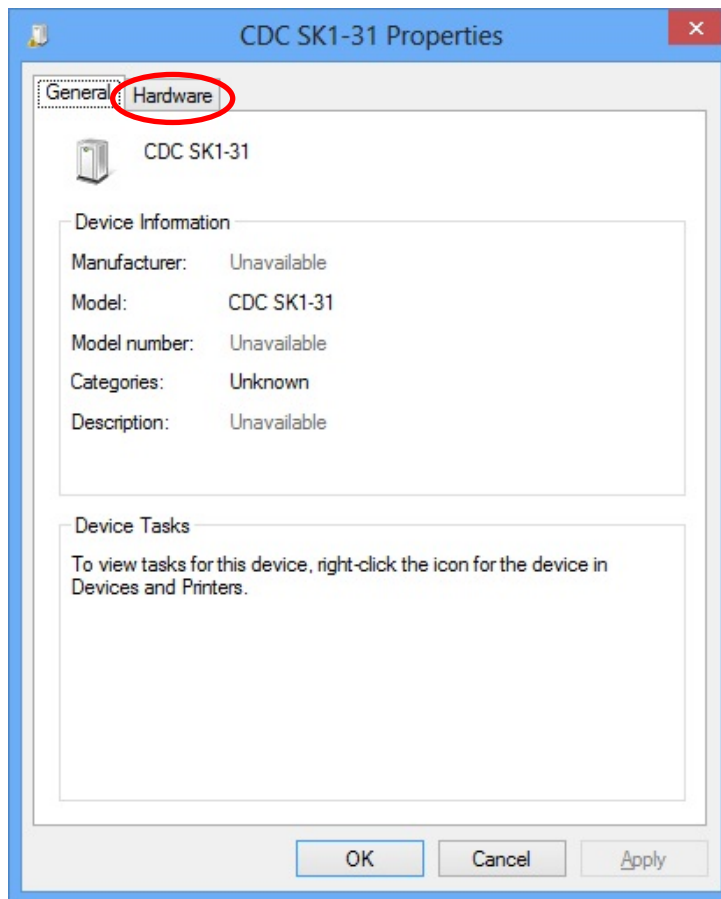
III. Installation of driver (Windows 7/8/10/11)

The procedure explained below is a sample installation of SANEI SK1-31 driver.

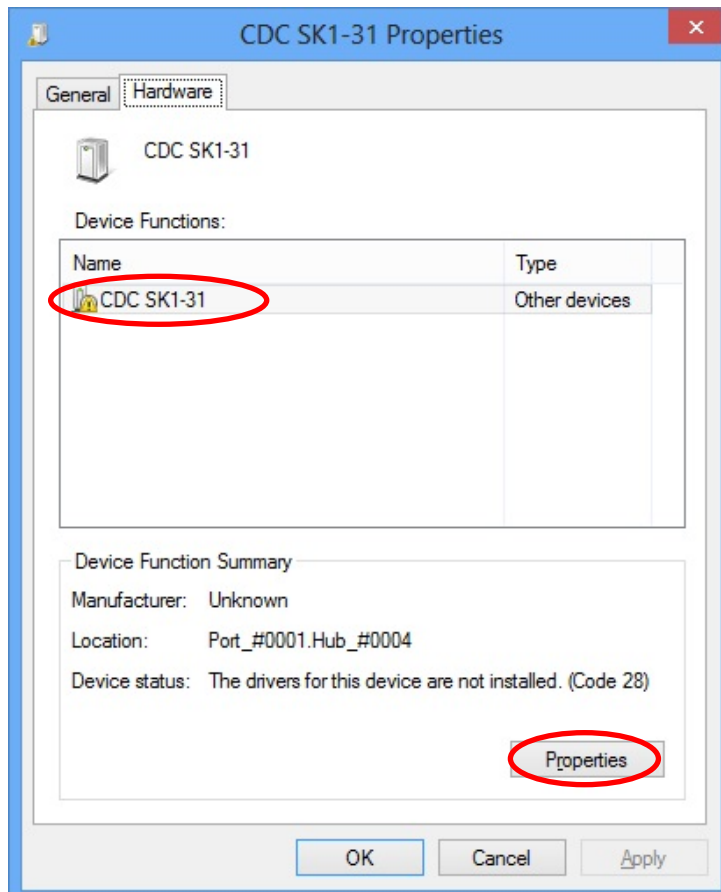
- 3-1. Power on printer and connect an USB cable to your PC.
- 3-2. "Unspecified" CDC SK1-31 appears on "Devices and printers".
Right-click and select "Property".



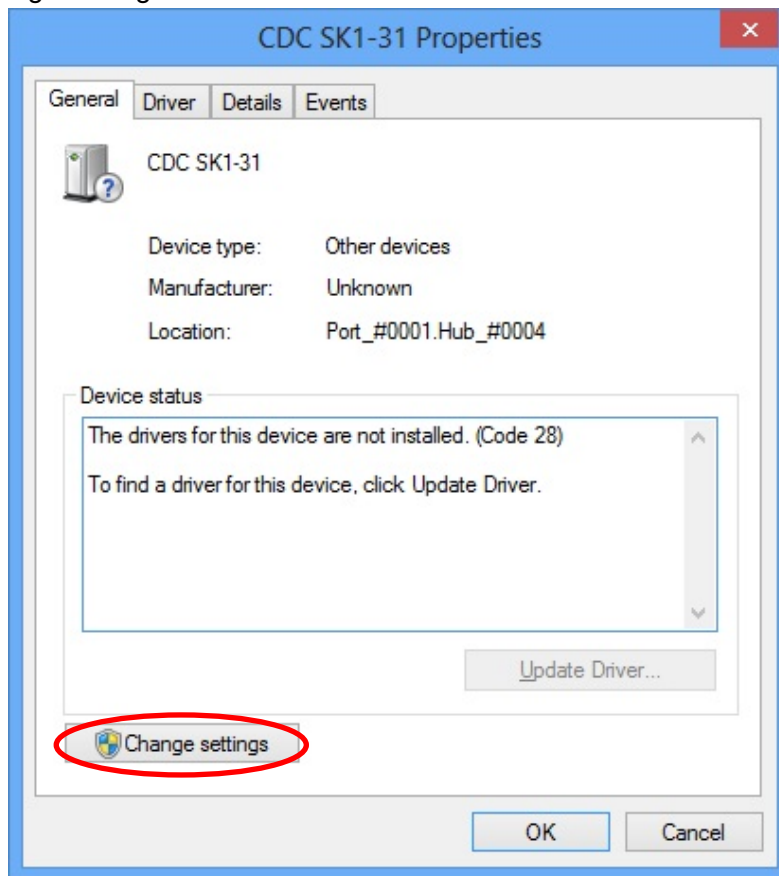
3-3. Click “Hardware” tab.



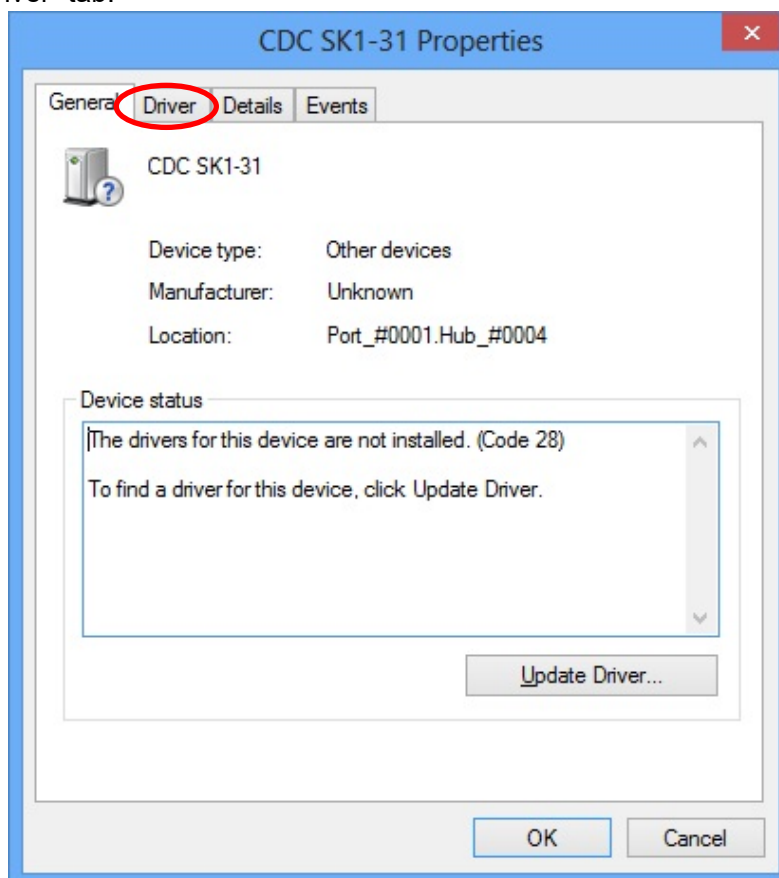
3-4. Select “CDC SK1-31” and click “Properties”.



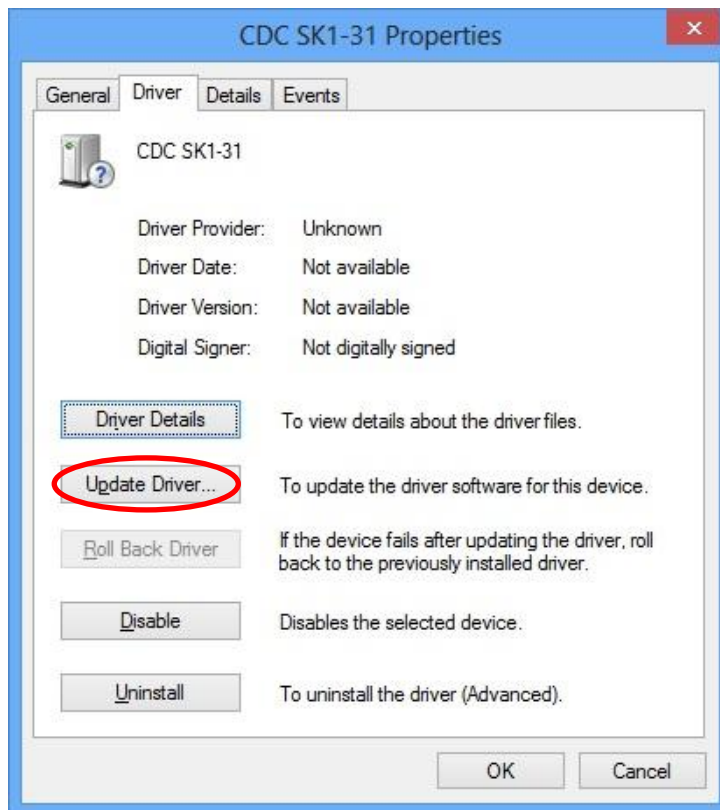
3-5. Click "Change settings".



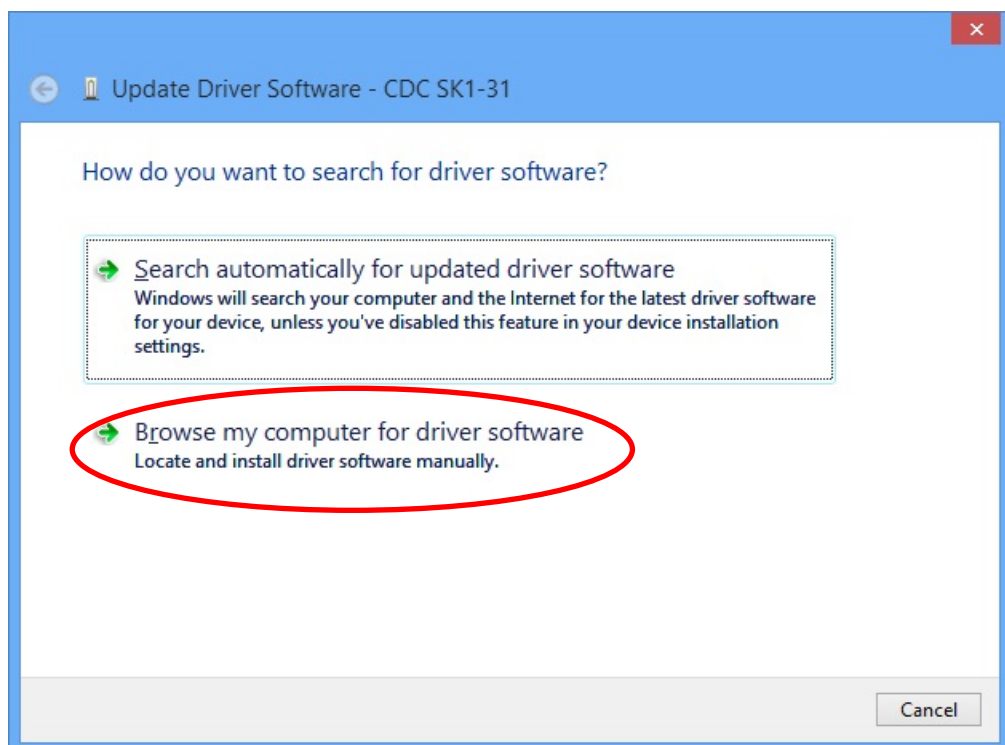
3-6. Click "Driver" tab.



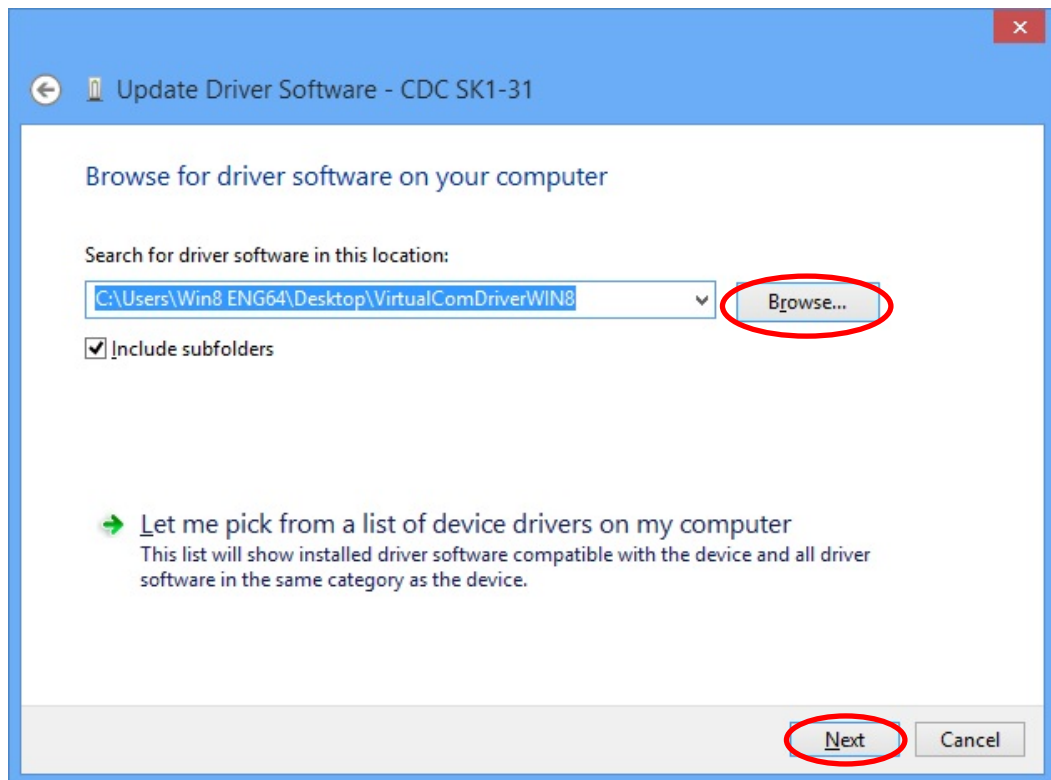
3-7. Click "Update Driver".



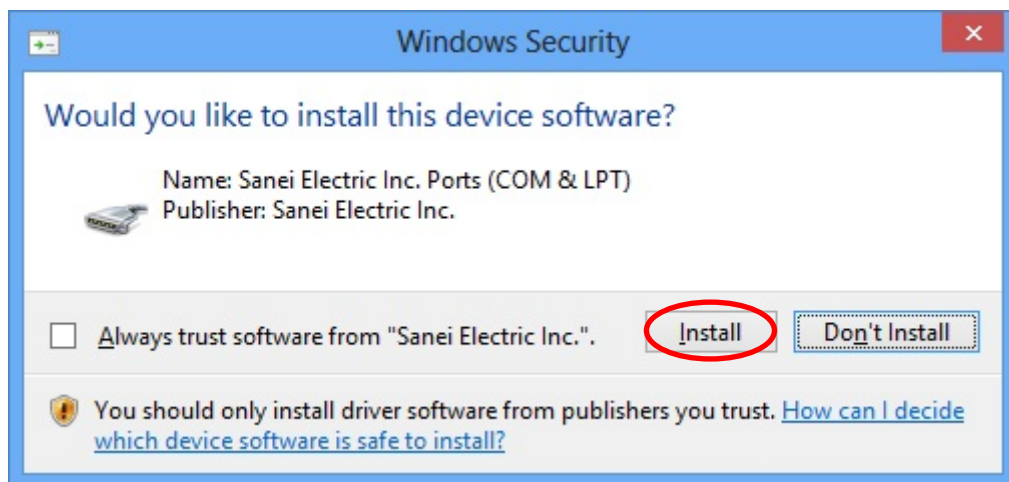
3-8. Click "Browse my computer for driver software".



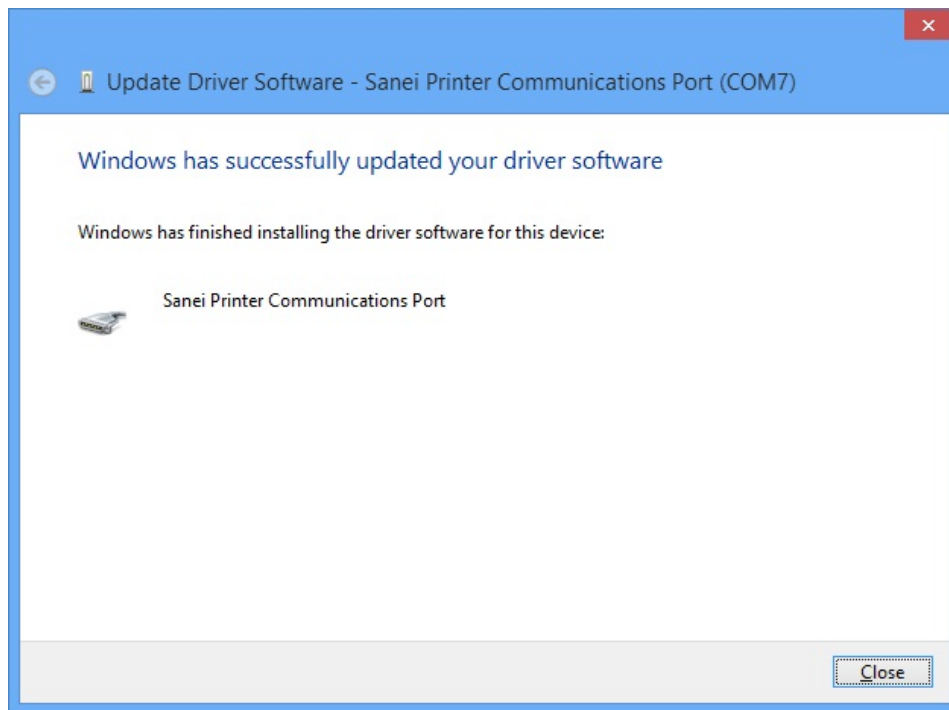
3-9. Click "Browse" and select a folder the driver is, and click "Next".



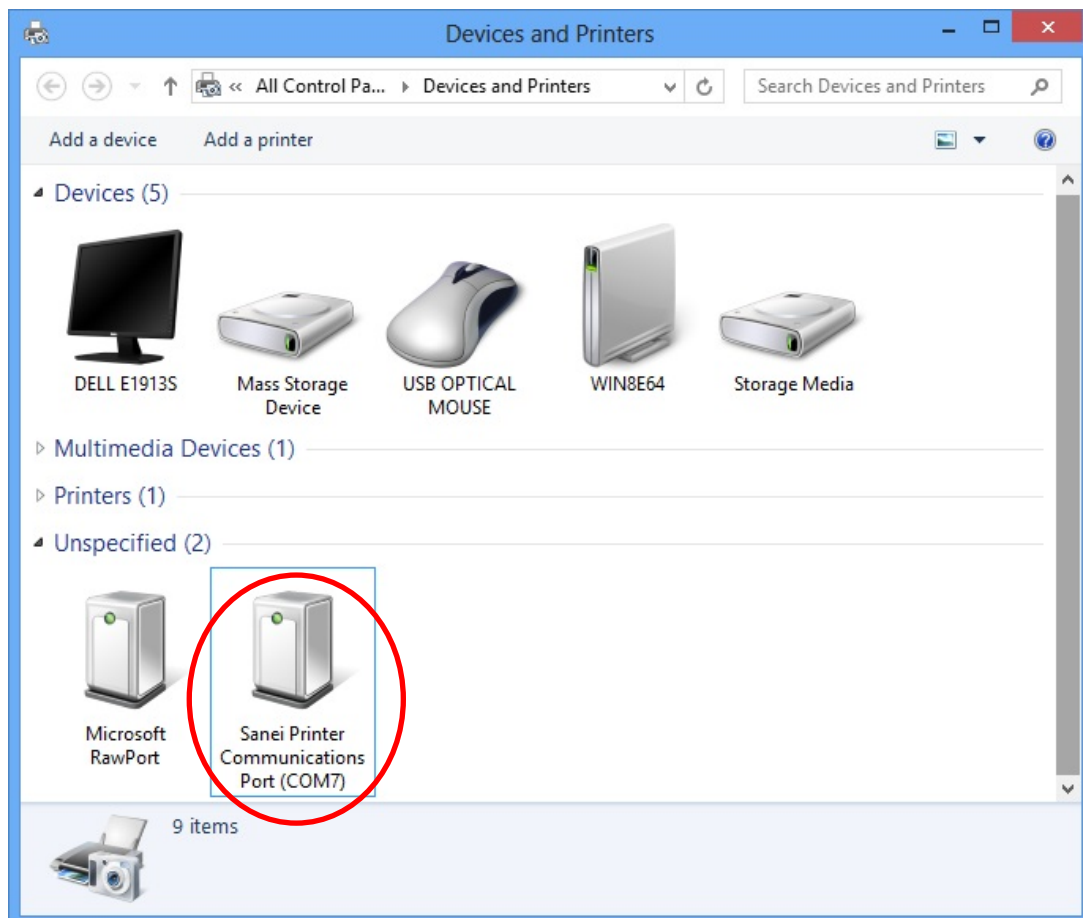
3-10. Click "install".



3-11. After the install process is finished, click “Close”.



3-12. If the installed device is displayed on “Devices and Printers”, the install process is finished.
REMARK: “SANEI SK1-31” is installed through this procedure, for example.



IV. Confirmation of printer port

The confirmation method of the virtual COM port (Printer Port) by “Device Manager” .

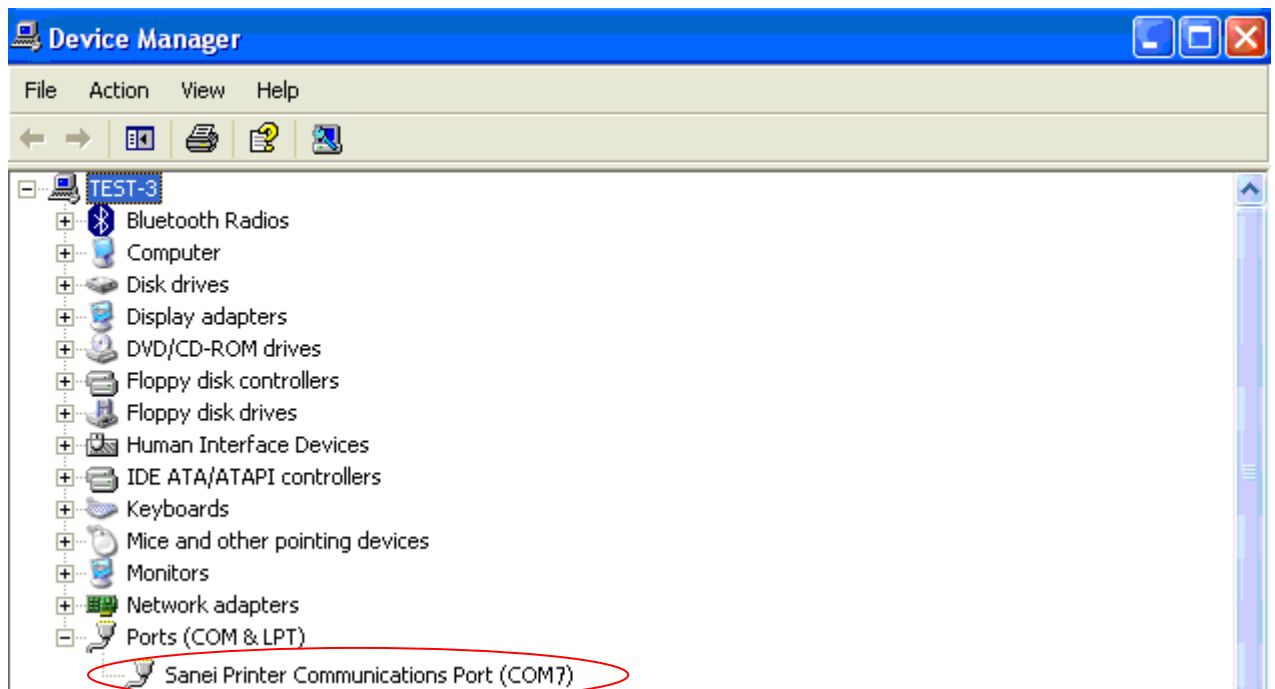
Select “Ports(COM & LPT)” shown below, and open the tree by clicking the same.

Then, the device should appear as “Sanei Printer Communications Port(COMx)”.

Please make sure to confirm Port COM number.

The Printer name specified on SDK API is displayed on this Port(Com).

(In the example shown below, it is “COM7”.)



V . Revision records

Rev No.	Date of revision	Details
Ver 1.1	Jun/2012	New creation Add applied printer type "SP1-21S". Add applied printer type "SP2-21S". Add applied printer type "BL2-58U". Add applied printer type "BLM-80". Add applied printer type "SM1-21". Add applied printer type "SM2-41".
Ver 1.2	MAR/2013	Additionally Corresponding to Windows7. Additionally Corresponding to Windows8.
Ver 1.5	MAR/2014	Add applied printer type "SP3-21".
Ver 1.6	MAR/2016	Add applied printer type "SM3-21". Add applied printer type "SD3-21/22".
Ver 1.7	AUG/2018	Additionally Corresponding to Windows10. Add applied printer type "SK4-31".
Ver 1.8	MAR/2022	Additionally Corresponding to Windows11. Add applied printer type "SM4-21/31".