

# *Printer Driver Manual for Windows*



Rev1.03 1804

# Contents

1 . Function overview .....	4
1-1. Function overview .....	4
1-2. Operating Environment .....	4
2 . Format Setting .....	5
2-1 . Print orientation .....	5
2-2 . Paper Source .....	6
2-3 . Printing format setting .....	7
3 . How to create and register the paper size .....	9
3-1 . How to newly create the paper size .....	9
3-2 . How to set the paper size .....	11
4 . Revision records .....	12

# Introduction

Please read the following terms and conditions of use before installing the software.  
During installation, you are assumed to have agreed to the following terms and conditions of use.  
If you do not agree to those, stop installing the software and delete all distributed files.

## Caution

- This software is owned by SANEI ELECTRIC INC. (hereafter SANEI), and SANEI holds the copyright and other related rights for the product.
- SANEI grants the right of use of the software to users so that they may use the products of SANEI in relation to the software.
- This software cannot be modified in any form in whole or in part. However, it can be copied or distributed as you desire.
- SANEI assumes no responsibility with the failure of software and software itself.
- SANEI assumes no responsibility with respect to possible direct or indirect loss or damage resulting from use of the software.
- SANEI may change the specifications of the software without prior permission from or notification of the user.

\*Microsoft Windows is a registered trademark of the Microsoft Corporation in the United States.

# 1 . Function overview

## 1-1. Function overview

The printer driver provides functions as Windows Printer from various software, which support printing function. The documents containing TrueType fonts or graphic data are printed after converting to monochrome graphics.

## 1-2. Operating Environment

OS:

- Microsoft Windows 7 (32bit / 64bit) SP1.
- Microsoft Windows 8. (32bit / 64bit) SP1.
- Microsoft Windows 8.1. (32bit / 64bit)
- Microsoft Windows 10. (32bit / 64bit)

Interface:

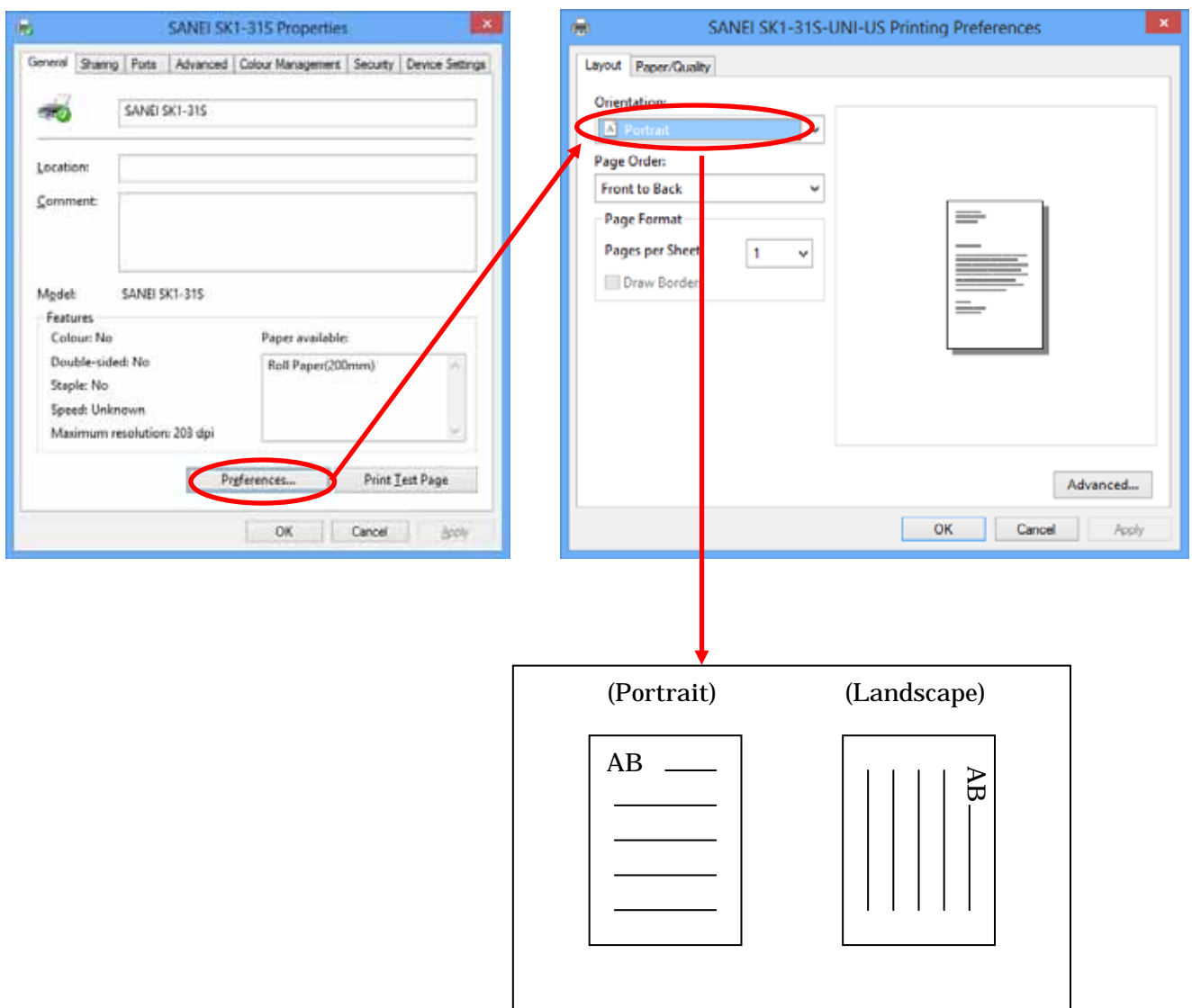
- USB / Printer class
- USB / Virtual COM
- Serial interface

## 2 . Format Setting

### 2-1 . Print orientation

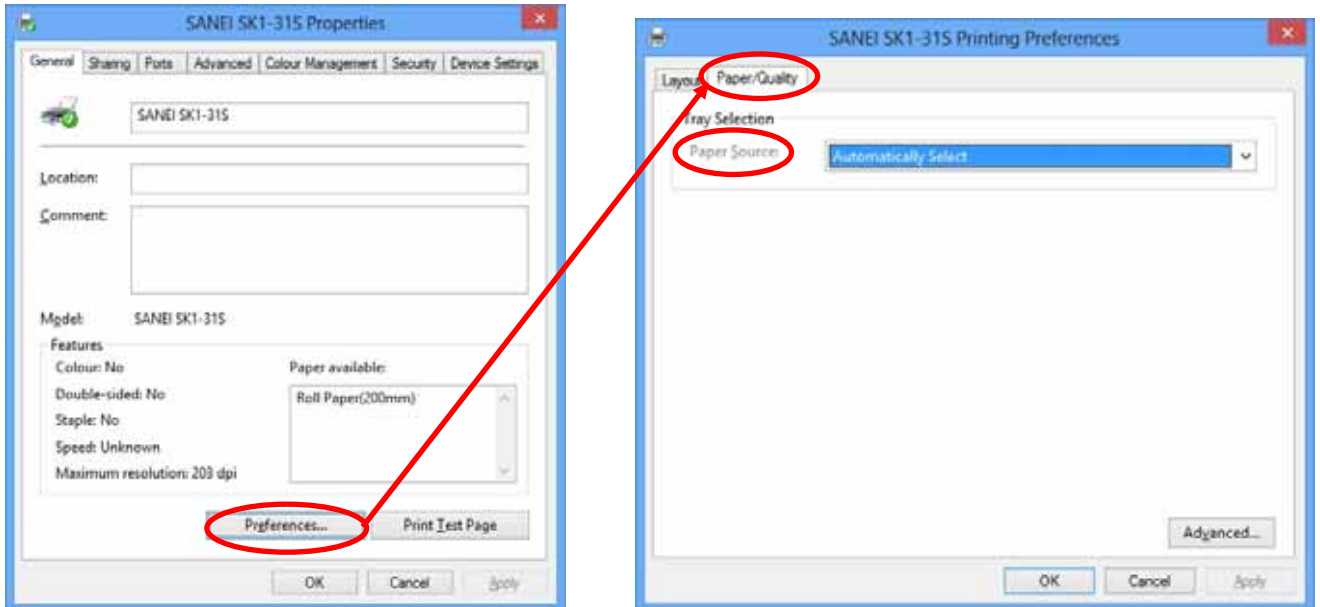
Orientation of printing can be set by 'orientation' of 'Preferences' in 'General' tab.

If the orientation can be set by an application, the setting by the application is given a priority over that of Properties.



## 2-2 . Paper Source

Paper source can be selected by 'Paper Source' of 'Preferences' in 'Paper/Quality' tab.



Variable length

Print by length of layout.

The length is depended on the page layout.

Fixed length

Print by the size of media set.

If the layout is shorter than the size of the media, it prints by the size of media.

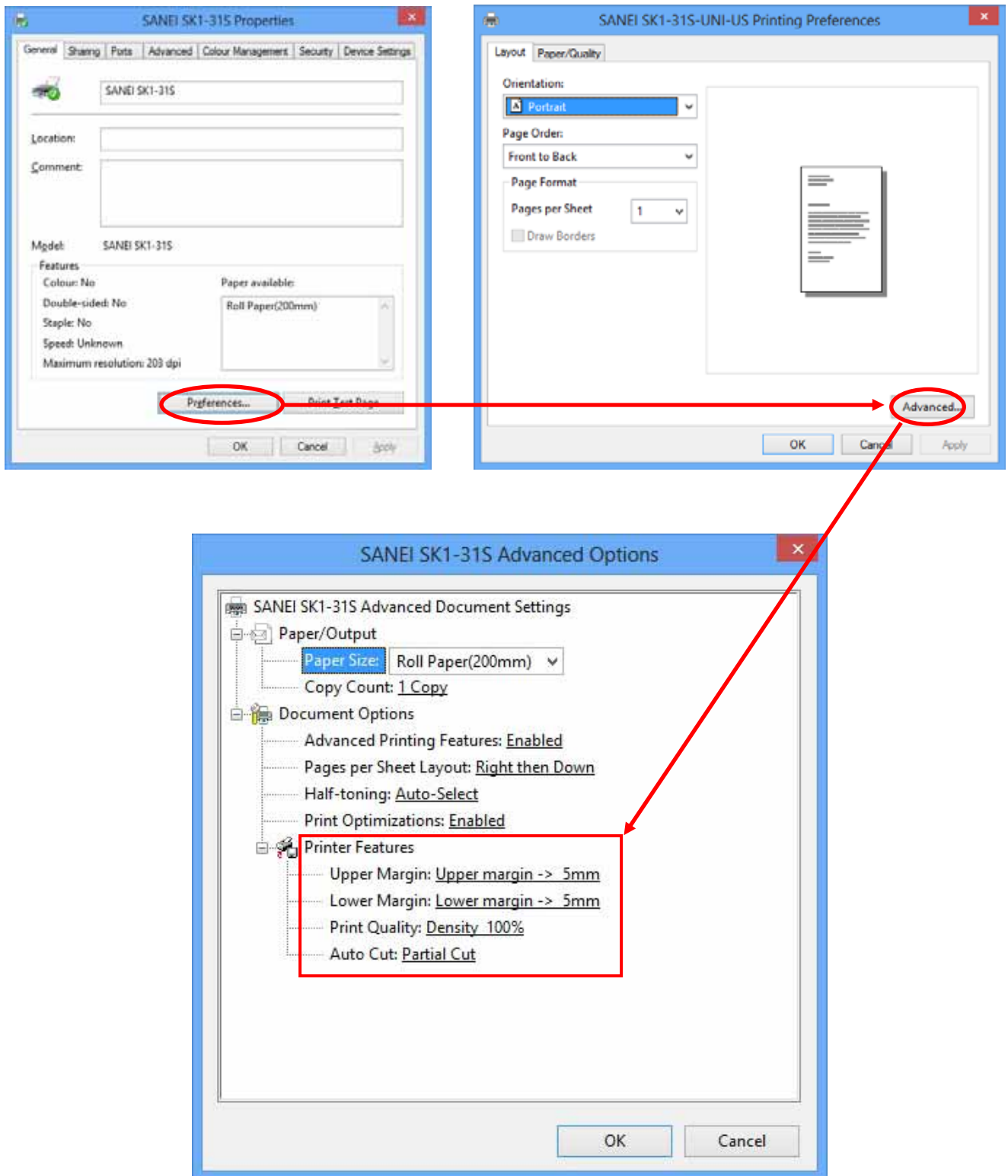
Automatically Select

Printing length can be switched fixed length and Variable length automatically by selected media size.

\* If the setting is wrong, warning window is displayed, and correct the setting automatically.

## 2-3 . Printing format setting

Printing format can be select by 'Preferences' – 'Advanced.'



- List of setting

\* The following item of settings are depended on type of printer.

- Paper Size

Select the paper size for printing

- Upper Margin

Insert upper margin page by page.

Setting area { 0mm , 5mm , 10mm , 15mm , 20mm }

- Lower Margin

Insert lower margin page by page.

Setting area { 0mm , 5mm , 10mm , 15mm , 20mm }

- Print Quality (Print density)

Select print density

Setting area { 60% , 80% , 100% , 120% , 140% , 160% }

The default setting is '100%'.

\* 160% of the density is a parameter for using particular media that is not recommended.

Thus, if you select '160%', Sanei doesn't warrant the life and durability of printer, because of decreasing printer life. Please test enough the function of the setting at your company.

- Auto Cut

Select cutting function page by page.

- No Cut : Printer doesn't cut paper.
- Partial Cut : Cut paper without one point.
- Full Cut : Fully cut paper.

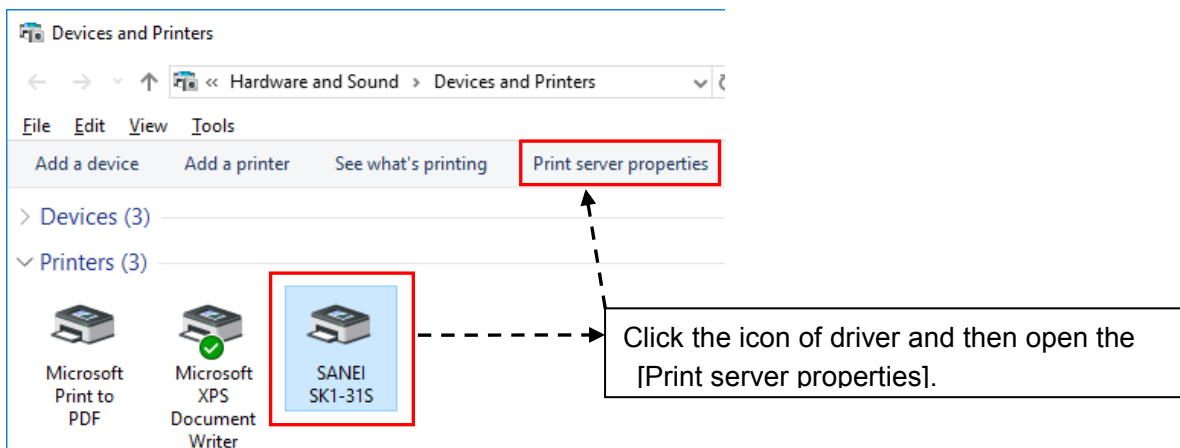


## 3 . How to create and register the paper size

### 3-1 . How to newly create the paper size

Take the following procedure in case of the new registration of the paper size.

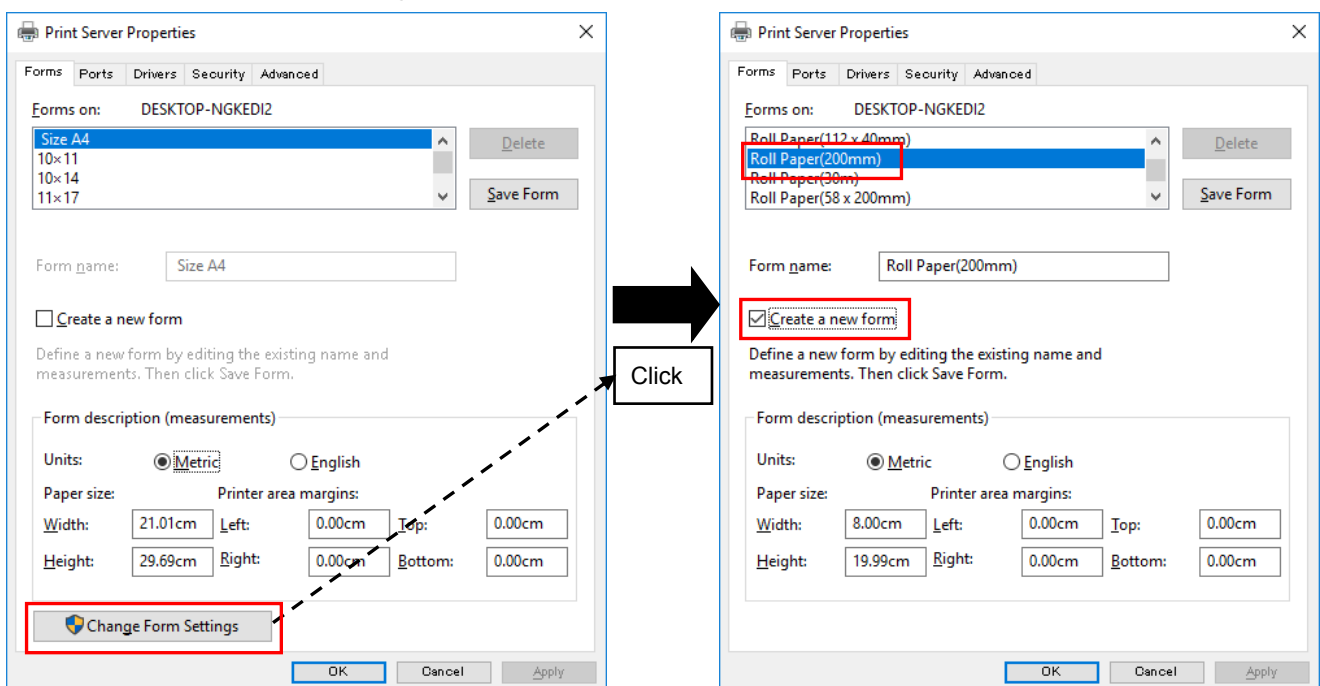
STEP1. Click the icon of relative driver from the window of [Devices and Printers] and then open the [Print server properties].



STEP2 . Click the [Change from Settings] from the tab of [Forms].

STEP3 . Select the paper size of default applied to Printer Driver from the paper list and then check the [Create a new form].

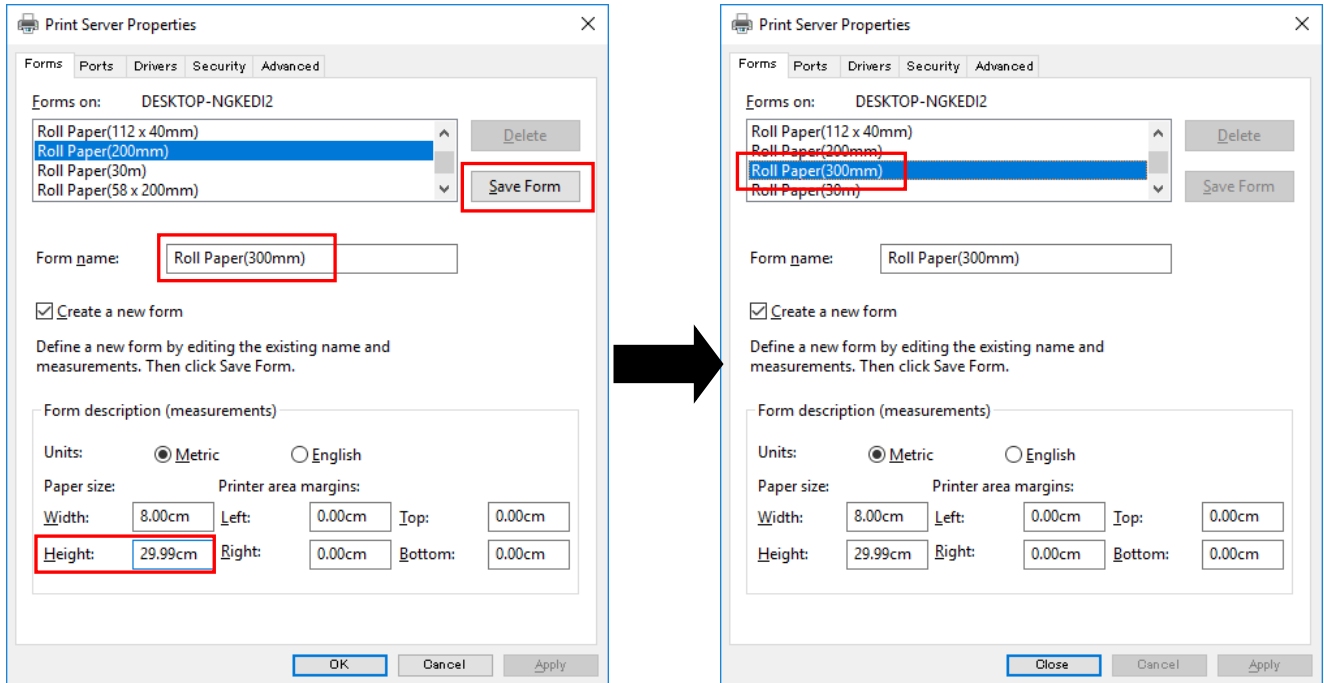
For the following case, select the [Roll Paper(200mm)].



STEP4 . Input the paper name and size (80mmX300mm) and use the [Save Form] to decide.

The following sample indicates the paper size (80mmX300mm) and the paper name of [Roll Paper(300mm)].

STEP5 . The target paper is registered and the paper creation is completed.

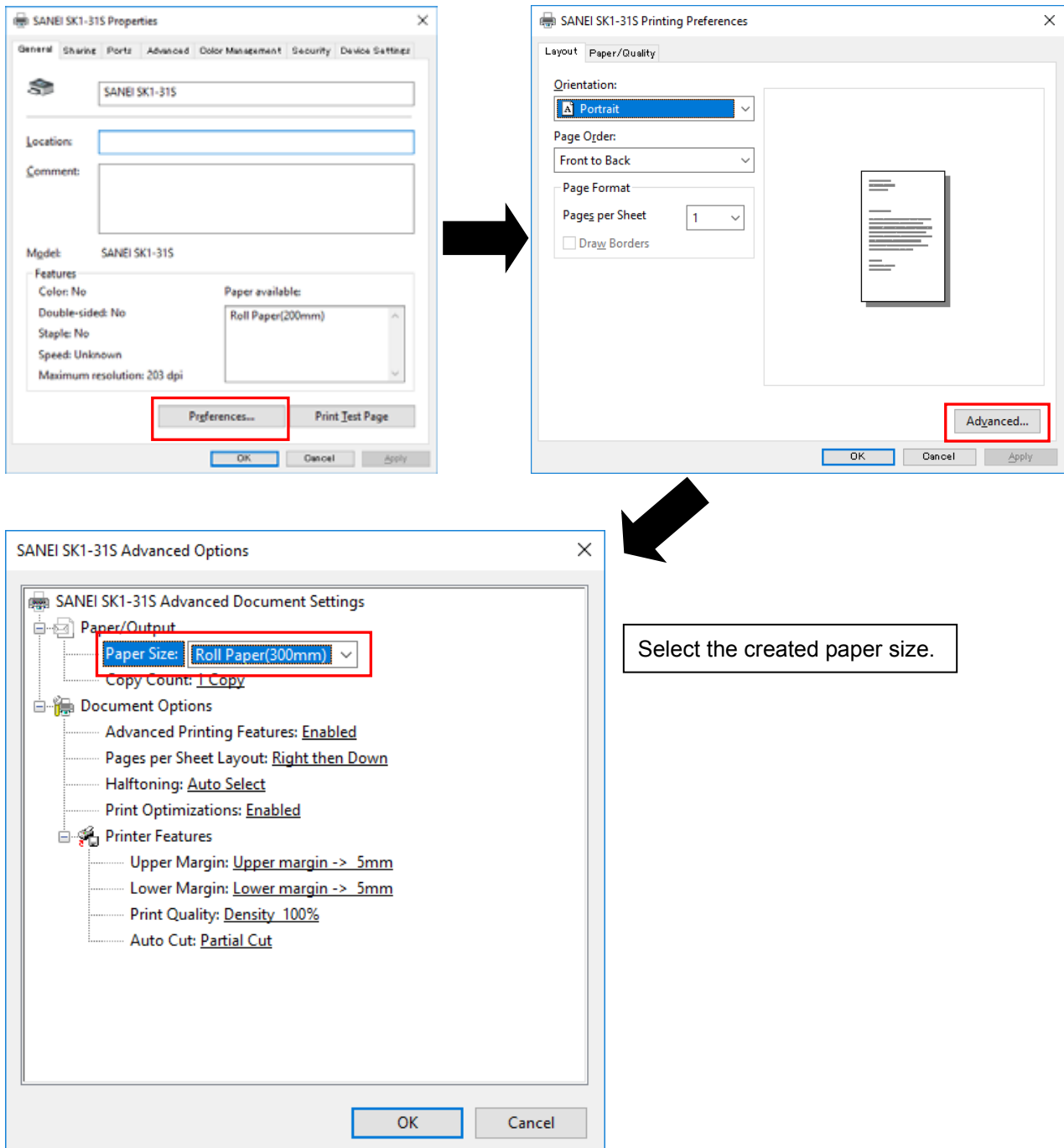


### 3-2 . How to set the paper size

Set the paper size prepared into the printer driver in accordance with the following procedure.

STEP1. Right Click the icon of target driver from the [Devices and Printers] and open the [Printer Properties].

STEP2. Open the [Preferences] → the [Advanced] from the tab of [General] in the properties and nominate the paper of created paper size.



## 4 . Revision records

Ver No.	Date of revision	Details
Ver 1.01	MAY/2015	New creation
Ver.1.02	Nov/2016	Additionally Corresponding to Windows10.
Ver.1.03	APR/2018	Delete status function.