

Sanei Memory Switch Setting Tool for Windows

User's guide

SM1-21

BLM-80

SM2-41

SM3-21

Revision History

Rev No.	Date of Revision	Models	Revision details
Rev1.0E	2020/10/23	SM1-21 BLM-80 SM2-41W SM3-21LW	Newly released

Table of contents

1. Function overview	5
2. Memory Switch setting method	6
3. Setting items for each printer	9

Introduction

Please read the following terms and conditions of use before operating the tool.

During operation, you are assumed to have agreed to the following terms and conditions of use.

If you do not agree to those, stop installing the software and delete all distributed files.

Caution

- This software is owned by SANEI ELECTRIC INC. (hereafter SANEI), and SANEI holds the copyright and other related rights for the product.
- SANEI grants the right of use of the software to users so that they may use the products of SANEI in relation to the software.
- This software cannot be modified in any form in whole or in part.
However, it can be copied or distributed as you desire.
- SANEI assumes no responsibility with the failure of software and software itself.
- SANEI assumes no responsibility with respect to possible direct or indirect loss or damage resulting from use of the software.
- SANEI may change the specifications of the software without prior permission from or notification of the user.

Sanei Electric Inc., Ltd. 2020

Unauthorized reproduction prohibited.

The contents of this document are subject to change without notice.

Windows is a trademark of Microsoft Corporation in the United States, Japan and other countries.

They are trademarks or registered trademarks, and they shall be used under license.

Other product names and company names are trademarks or registered trademarks of the respective companies.

1. Function overview

1-1. Function overview

This tool allows you to make various settings of the memory switch of the printer on your PC.

1-2. Operating environment

OS:

Microsoft Windows 7 (32bit/64bit) After SP1

Microsoft Windows 8 (32bit/64bit)

Microsoft Windows 10 (32bit/64bit)

.NET Framework 4.0 or over install required

Interface:

USB (Printer class)

1-3. Restriction

To set the settings from this tool, change the memory switch setting of the printer to the following.

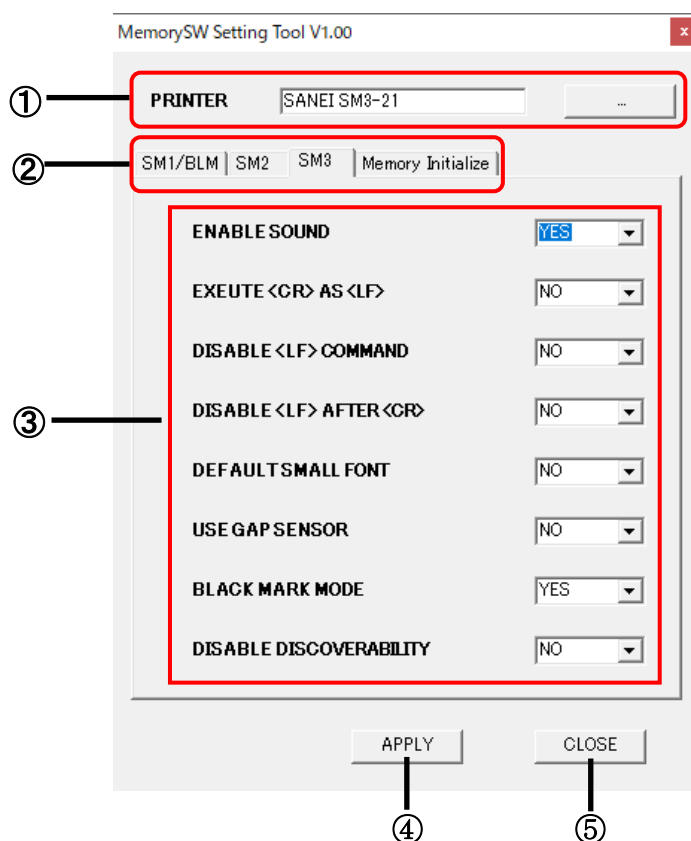
- 「ENABLE USB INTERFACE = YES」
- 「USB IN DEVICE MODE = YES」
- 「PROTOCOL MODE = Disabled」

Above items cannot be set by the tool as they are related to the communication between PC and printer.

2. Memory Switch setting method

2-1. Main screen

Main screen in below will appear by executing “MemorySwSetting.exe” .



① Printer name

Displays the name of the printer selected by the browse button.

② Function selecting tab

The Settings tab of the specified printer is shown.

For memory initialization, select the memory initialization tab.

③ Setting items

Shows the setting information for memory switch settings.

Change the setting tab for each item in case needed to change.

④ Apply button

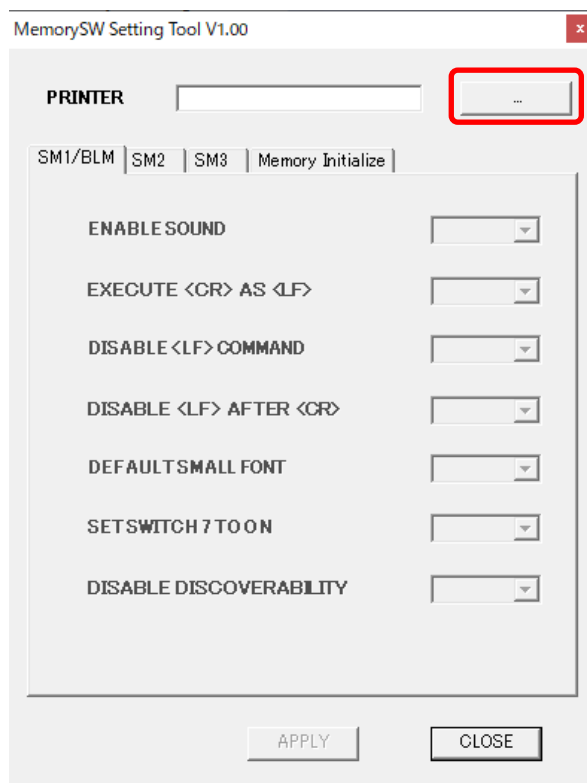
Saves the settings of the selected memory switch to the printer.

⑤ Close button

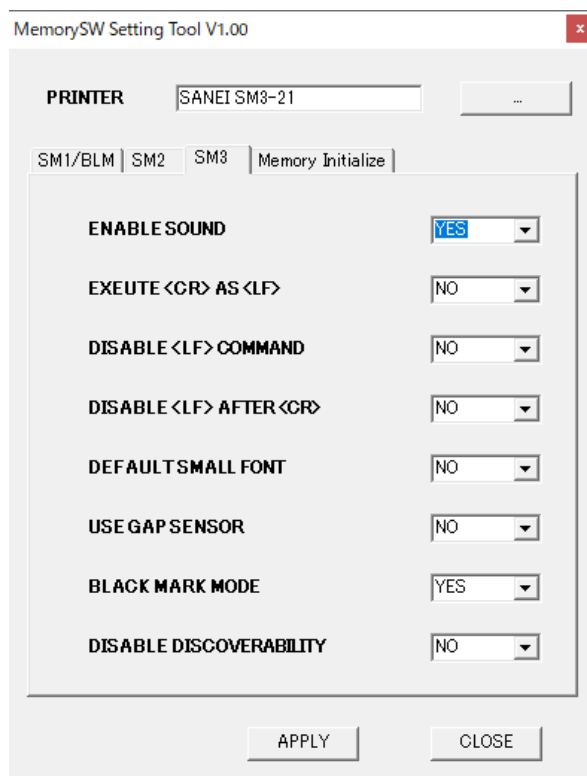
Finish the setting tool.

2-2. Tool operation

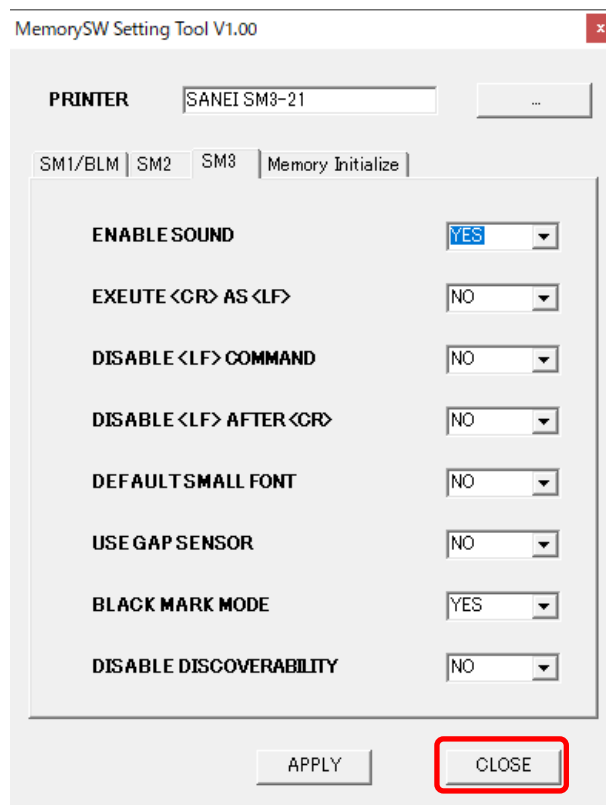
- 1) Execute "MemorySwSetting.exe" tool.
- 2) Click the browse button to specify the printer name.



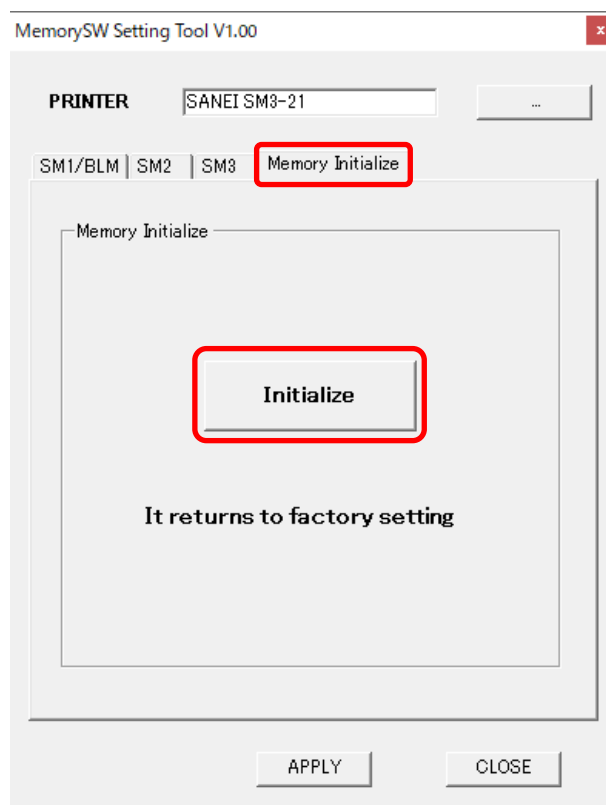
- 3) Reads the setting information from the selected printer and reflects it to the setting items.



- 4) After changing setting items, press "apply" button.
Save the setting information in the printer.



- 5) In case of setting to initial status, select "memory Initialization" tab.
Click "Initialize" button to execute.



3. Setting items for each printer

The memory switch setting items that are dependent on each printer models are shown in below.

	SM1-21/BLM-80	SM2-41	SM3-21	Function
ENABLE SOUND	○	○	○	Enabling buzzer sound
EXECUTE <CR> AS <LF>	○	○	○	Enabling CR
DISABLE <LF> COMMAND	○	○	○	Enabling LF
DISABLE <LF> AFTER <CR>	○	○	○	Enabling LF following CR
DEFAULT SMALL FONT	○	○	○	Setting FONT B (16x9) as default
SET SWITCH 7 TO ON	○	—	—	Enabling IrDA
USE GAP SENSOR	—	○	○	Enabling GAP sensor
BLACK MARK MODE	—	○	○	Enabling Label mode
XON/XOFF	—	○	—	Enabling XON/XOFF
DISABLE BLUETOOTH	—	○	—	Disabling Bluetooth
DISABLE DISCOVERABILITY	○	○	○	Disabling Discovery mode