

# Large caliber paper holder HL2 Series

## INSTRUCTION MANUAL

### Introduction

Thank you very much for purchasing the Large caliber paper holder HL2 Series. Read the 'Instruction manual' carefully before using this printer for safe handling of it. Save these instructions for future reference.

### 1. Classifications

The printer models are designated by the following method

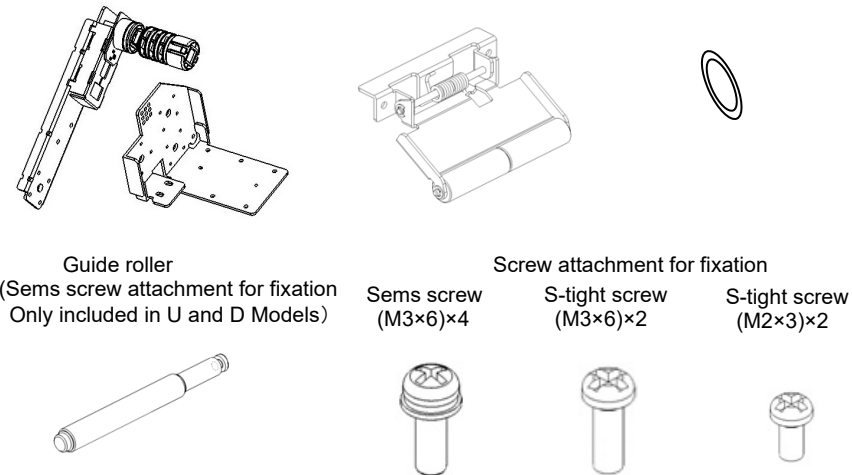
**MODEL : HL2-SK1-U**

- ① Setting Position
- Without U/D : Setting side to paper roll (No guide included)
  - U : Setting upper on paper roll (One guide roller included)
  - D : Setting below paper roll (Two guide rollers included)

### 2. Accessories

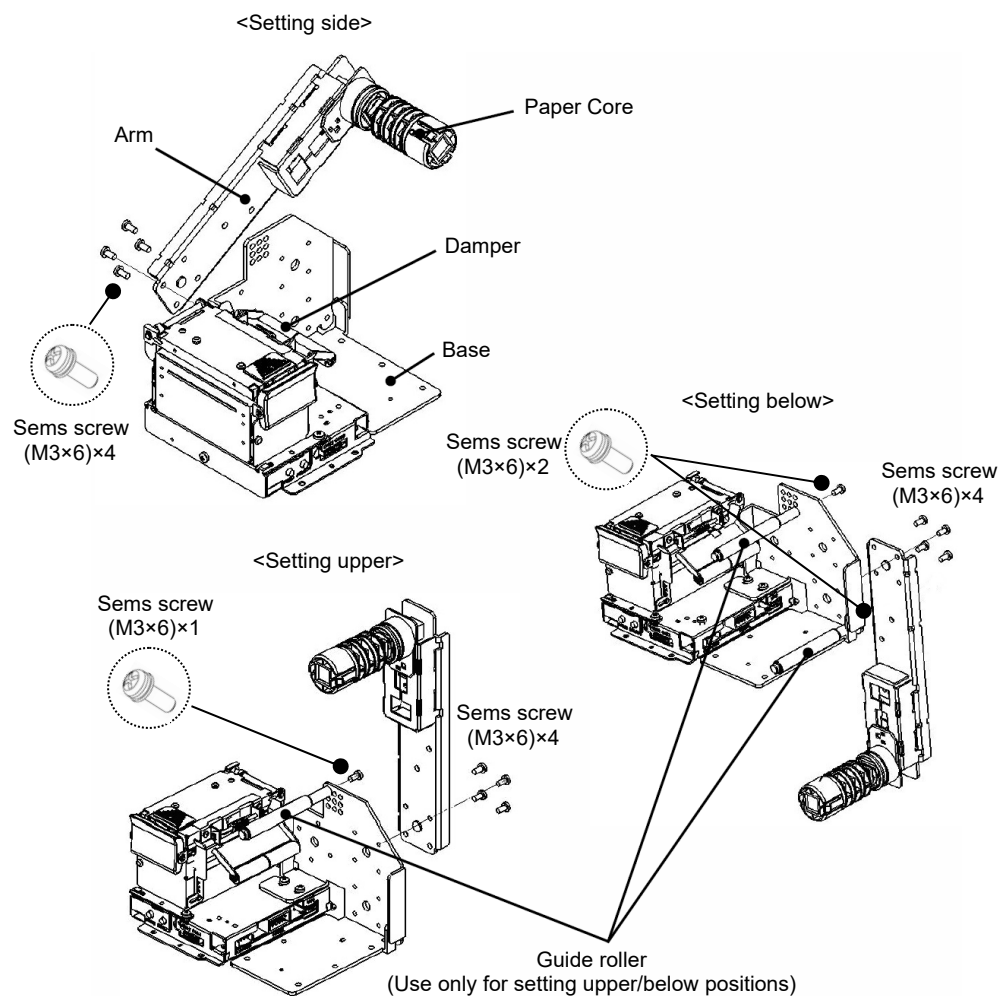
When unpacking the printer, make sure the following components are provided.

HL2 unit 1 unit      Damper 1 piece      O Ring 2 pieces



### 3. Assembly of HL2 unit

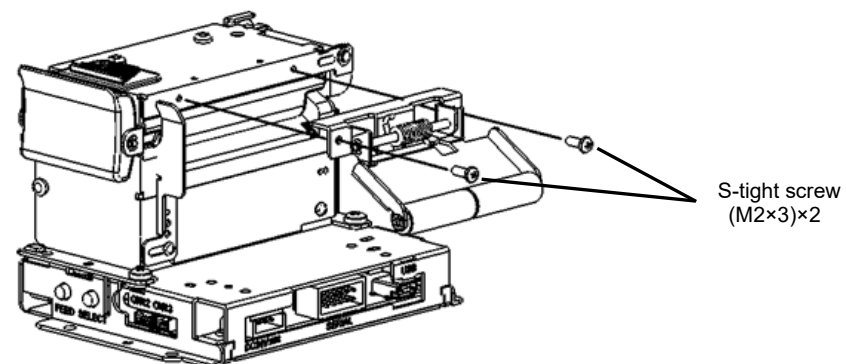
An arm can be attached to a base with screws and washers as figure below. Setting the arm upper or below side of the base, a guide roller is attached to the base. ※Recommendable torque for tightening screw is 0.6 N · m.



### 4. Installation of a damper

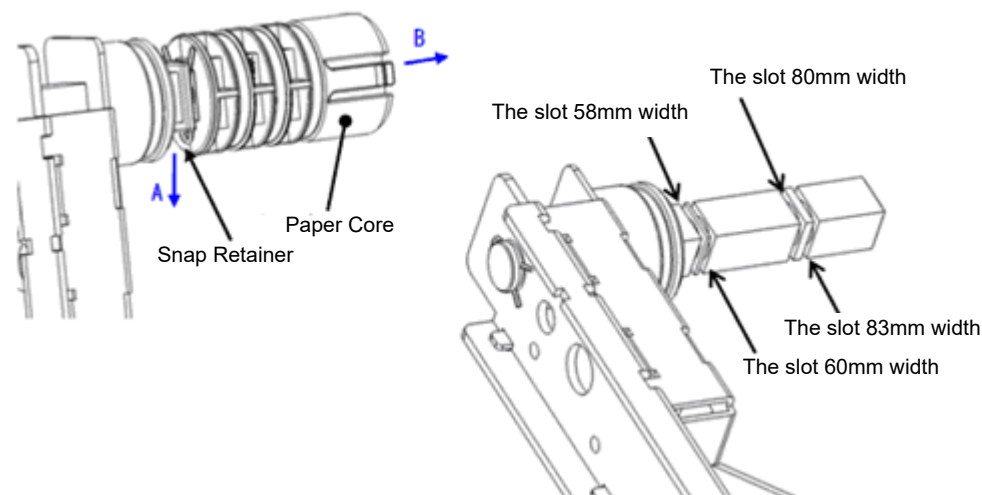
For using the holder, mount a damper included in the goods by attached screws (S-tight screw (M2×3)×2) as following figure.

※Recommendable torque for tightening screw is 0.3 N · m.  
Please remove the originally mounted damper first before installing new one.



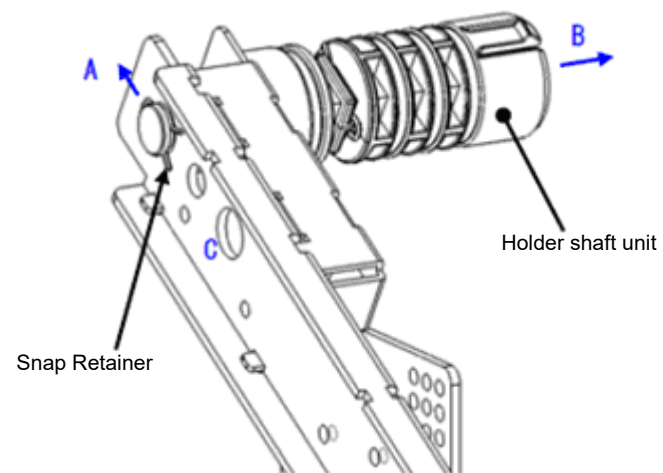
### 5. Change of the paper core to paper width

- ① Pluck snap retainer in the direction of A
- ② Slide A paper core to B direction.
- ③ A snap retainer is put in according to the slot of the paper width of a holder shaft.



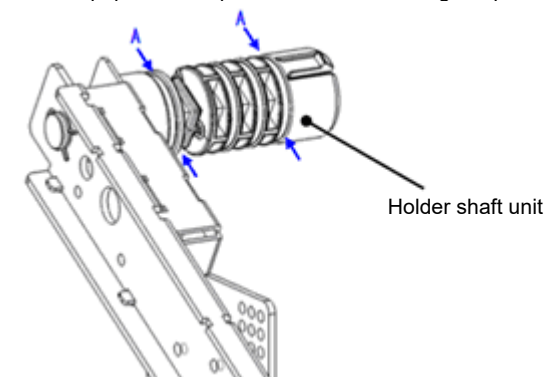
### 6. Changing arm length of the caliber of a paper

- ① Pluck snap retainer in the direction of A
- ② Pluck holder shaft unit in the direction of B
- ③ Put holder shaft unit into hole C and insert snap retainer.



### 7. O ring mounting instruction (plastic paper core use only)

When a paper core is plastic, as shown in a figure, please attach O ring (two piece) to A part.

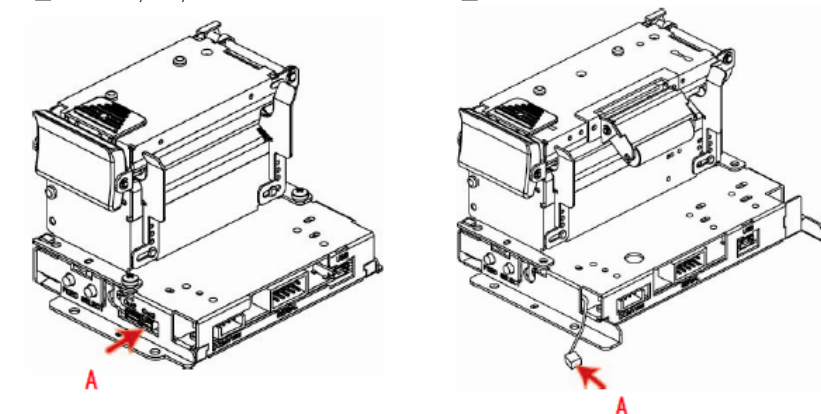


### 8. Connecting near-end cable

Connect near-end cable to connector A

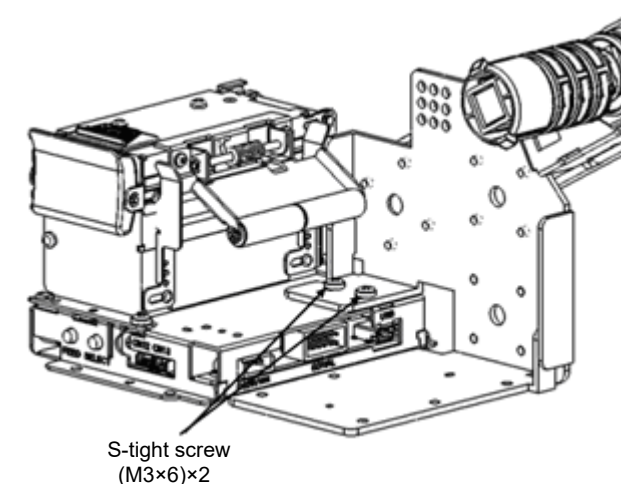
SK1-20/201/301

SK1-30



### 9. Mounting HL2 on SK1-21/SK1-31

Mount HL2 on SK1-21/SK1-31 by attached screws (S-tight screw (M3×6)×2), as figure below. ※Recommendable torque for tightening screw is 0.6 N · m.



**SANEI ELECTRIC INC.**

Head office  
2-51-13 Ikebukuro, Toshima-Ku, Tokyo, 171-0014,  
Japan  
Phone: +81-3-3986-0646 (Representative)  
+ 81-3-3986-1188 (Overseas sales)  
Fax: +81-3-3988-5876  
URL: <http://www.sanei-elec.co.jp>