

---

## **BL2-58 Printer driver**

---

Version No. : Version 1.0

---

DATE : 2008/11/05

---



— Contents —

1. Introduction	1
2. Terms and conditions	1
3. Operating environment	2
4. Installation	3
5. Printer property	9
5-1. Type of driver	9
5-2. Choice of paper size	9
5-3. Paper orientation	10
5-4. Paper source	11
5-5. Detail setting	13

## 1. Introduction

Please read the following terms and conditions of use before installing the software.  
During installation, you are assumed to have agreed to the following terms and conditions of use.  
If you do not agree to those, stop installing the software and delete all distributed files.

## 2. Terms and conditions

This software is owned by SANEI ELECTRIC INC. (hereafter SANEI), and SANEI holds the copyright and other related rights for the product.

SANEI grants the right of use of the software to users so that they may use the products of SANEI in relation to the software.

This software cannot be modified in any form in whole or in part. However, it can be copied or distributed as you desire.

SANEI assumes no responsibility with the failure of software and software itself.

SANEI assumes no responsibility with respect to possible direct or indirect loss or damage resulting from use of the software.

SANEI may change the specifications of the software without prior permission from or notification of the user.

Microsoft Windows is a registered trademark of the Microsoft Corporation in the United States.

### 3. Operating environment

#### 3-1. Host computer

PC-AT compatible (DOS-V)

#### 3-2. Operating systems

Windows XP / Windows 2000

The confirmed OS for BL2-58 driver is as follows.

Windows2000 Professional (Service Pack 4)

Windows XP Professional (Service Pack 2)

#### 3-3. Applicable Interface

Serial / Parallel / USB

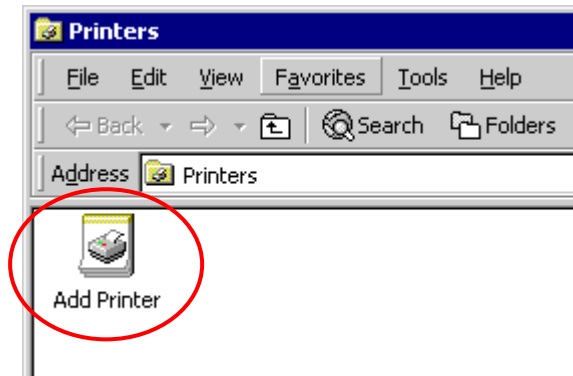
#### 3-4. File construction

Printer driver	File name	Note
Printer driver module	BL2-58.DLL	
Defined file	BL2-58.GPD	
INF file	BL2-58.INF	

## 4 . Installation

The following procedure shows the installation of BL2-58 printer driver.

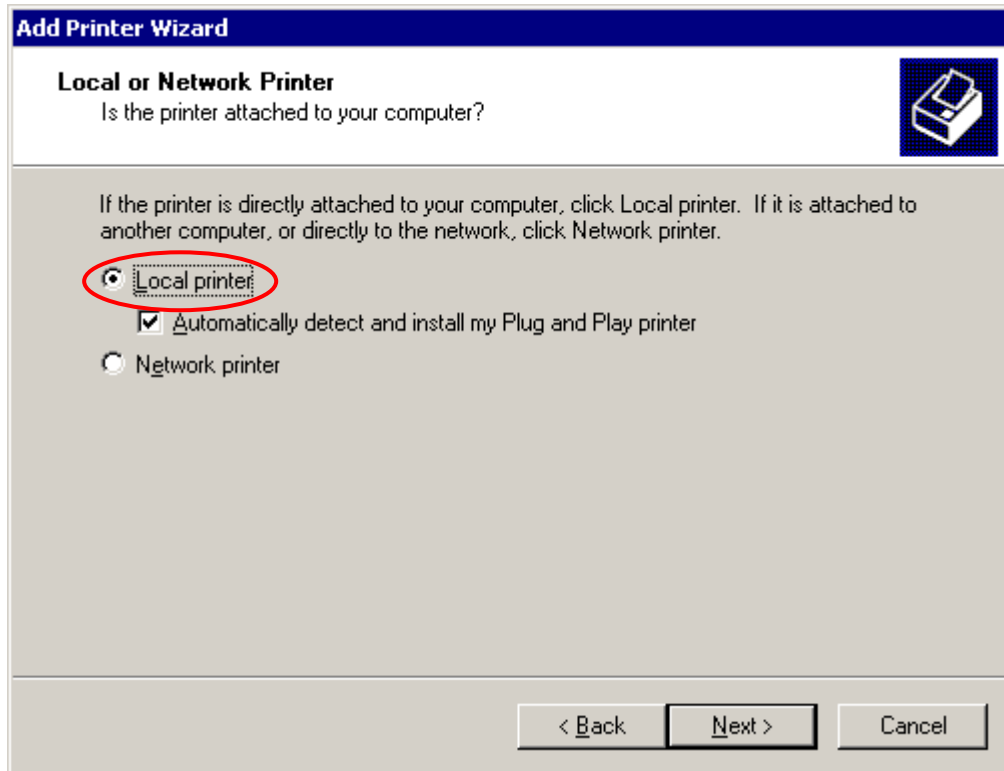
4-1. Open the Printers holder from Windows “Menu” and execute “Add Printer”.



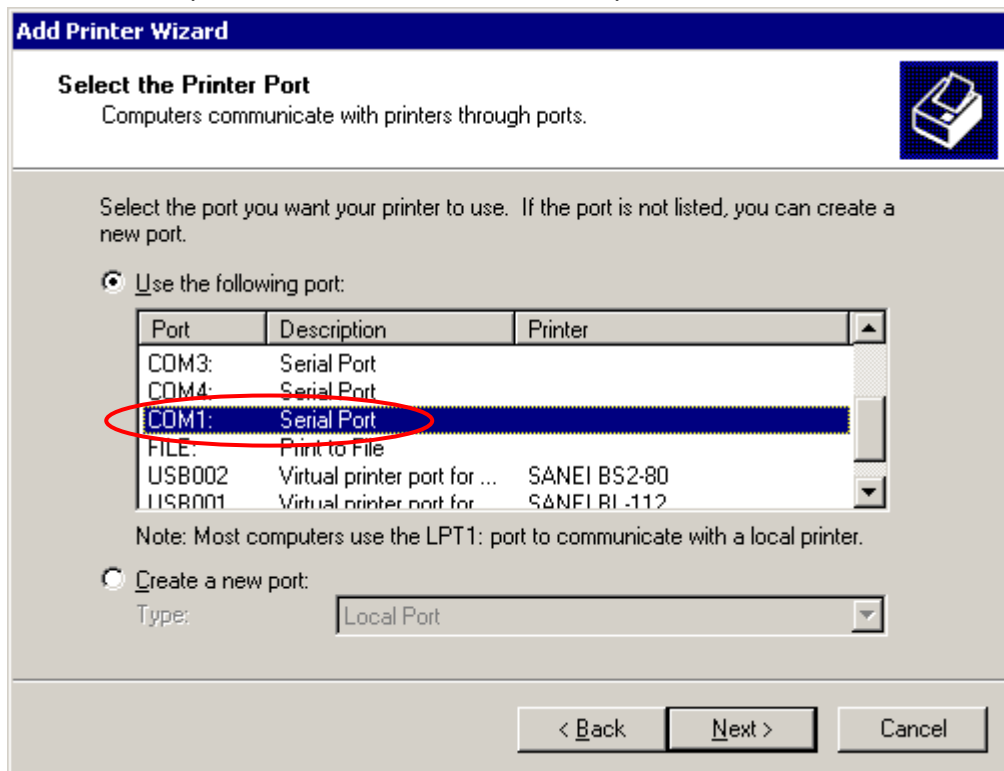
4-2. After execution, the following dialog appears and click Next (N)



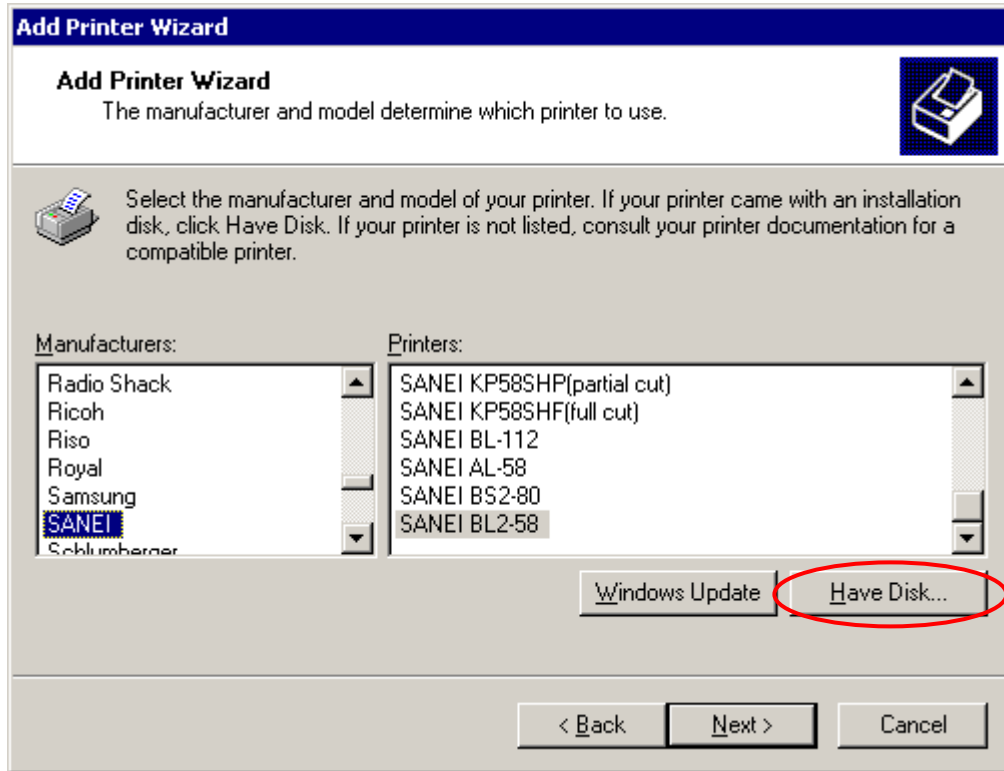
4-3. As shown in dialog, check the Local printer (L) and click Next (N).



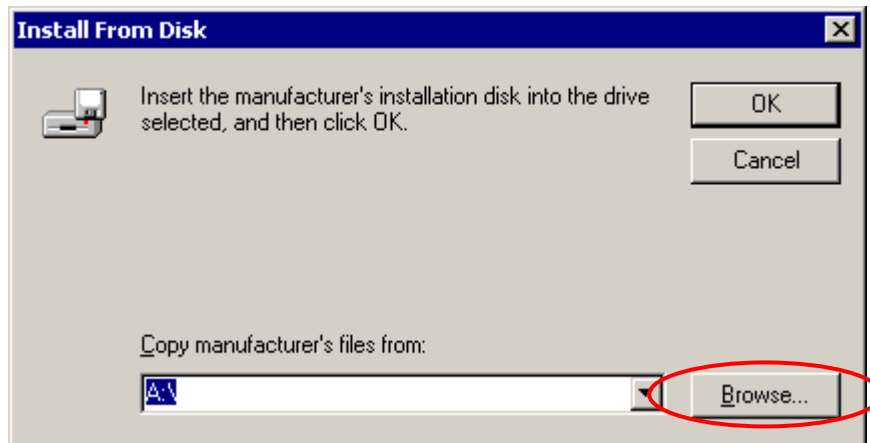
4-4. Choose the suitable port and click "Next". (The below picture shows COM 1 )



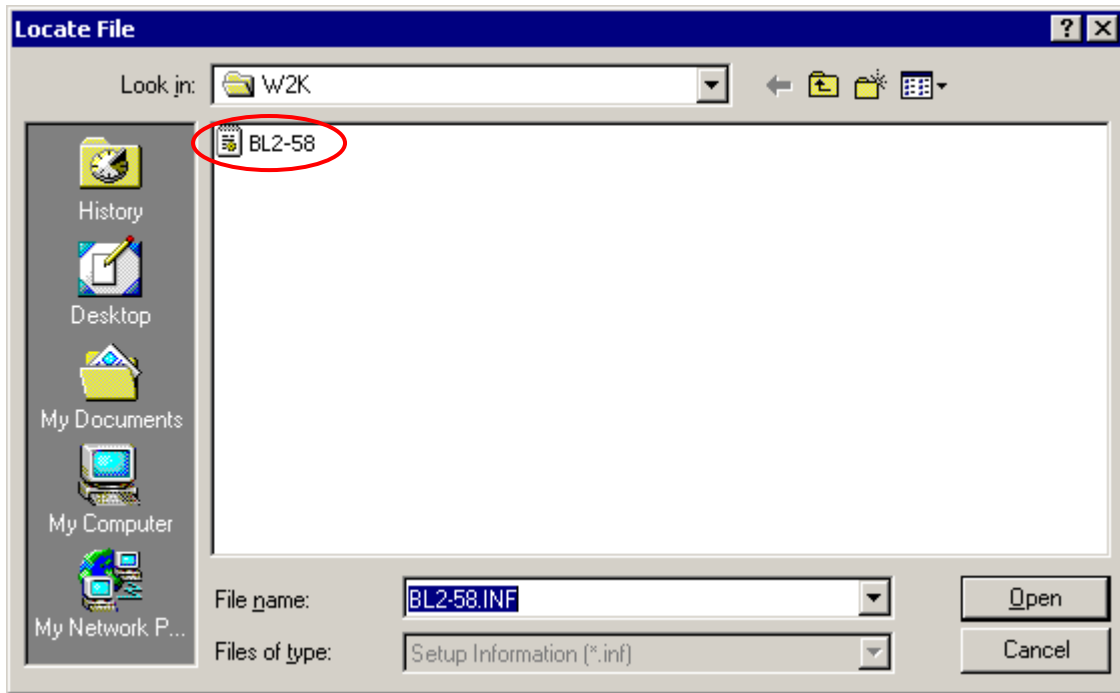
4-5. The below printer wizard appears, then click “Have Disk(H)”.



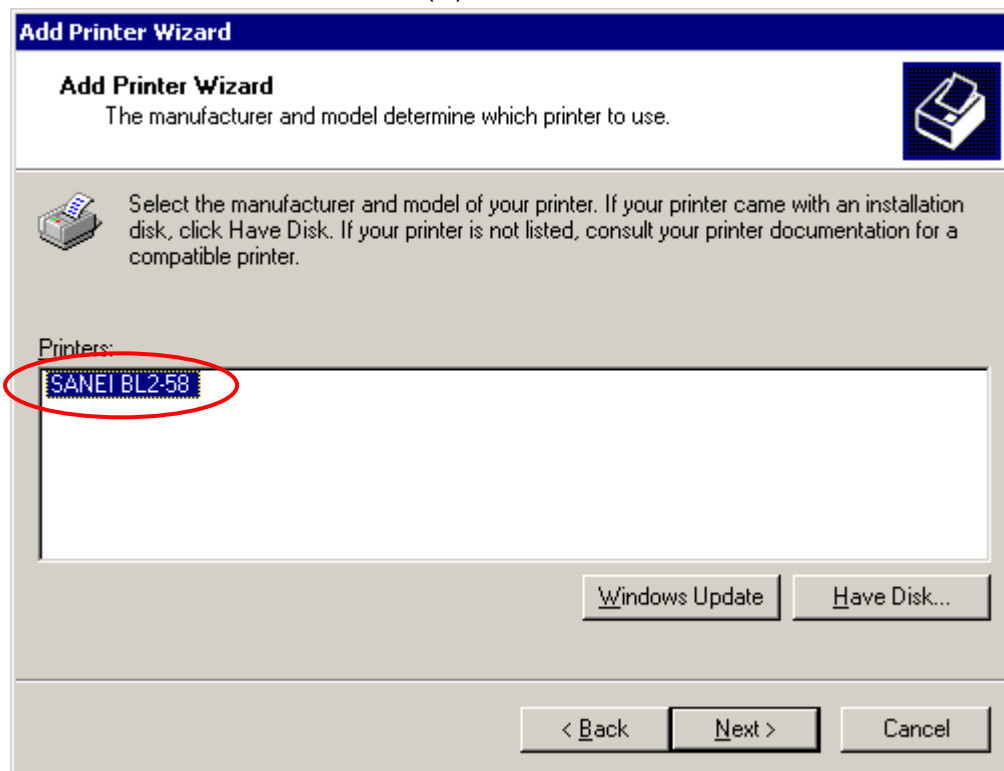
4-6. Specify the installing desk of the driver and click the “Browse”.



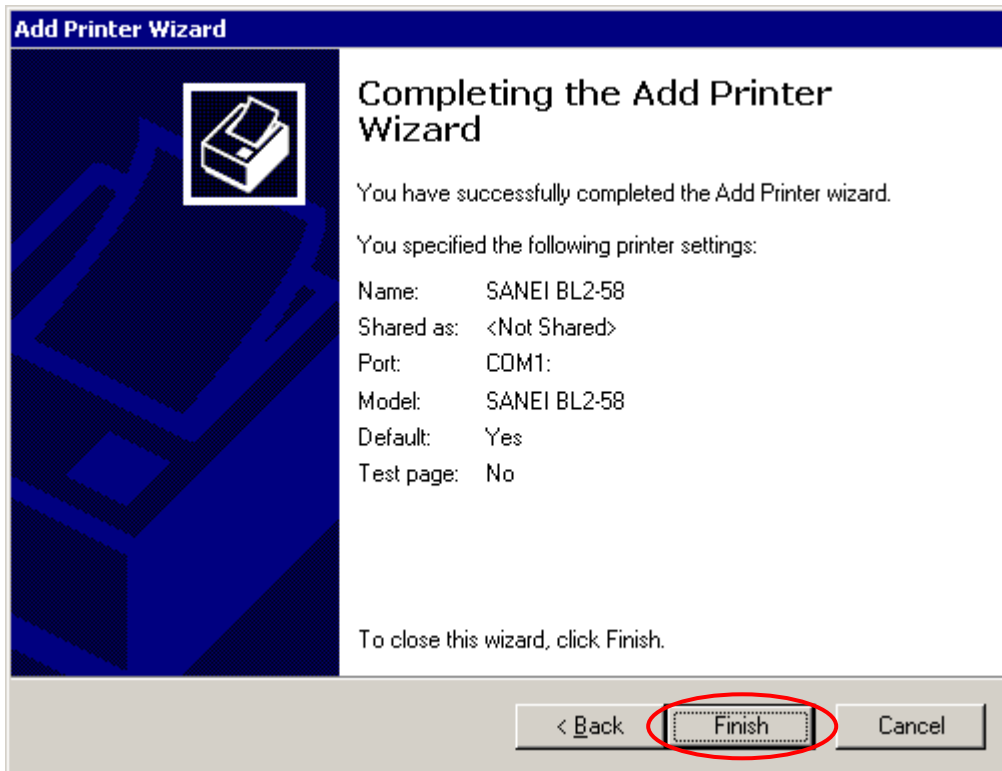
4-7. Choose BL2-58.Inf and 4.6 dialog shows up again. Click “OK”



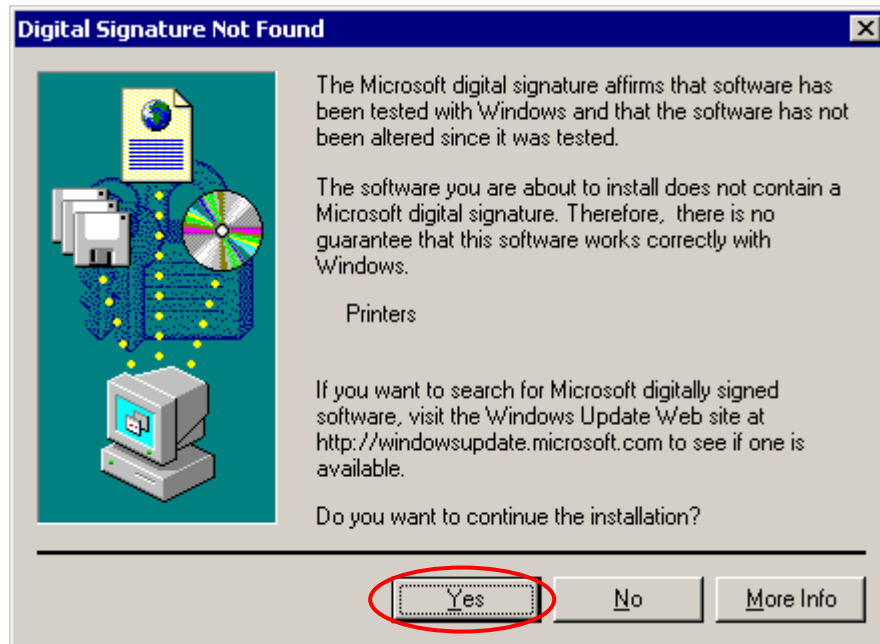
4-8. Choose SANEI BL2-58 and click “Next (N)”.



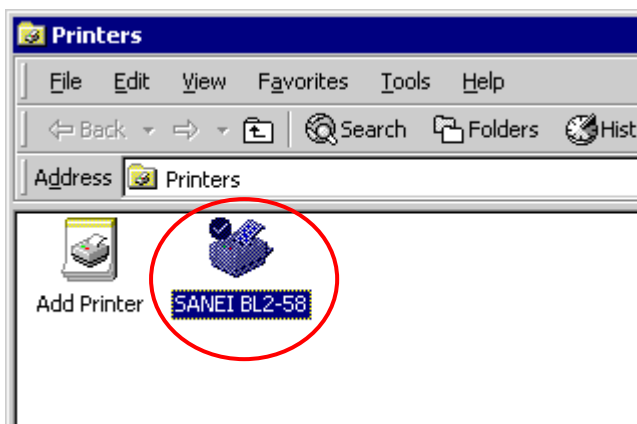
- 4-9. Follow the dialog and choose the right box continuously.  
The last dialog shows up as below and click “Finish” to close the printer wizard.



- 4-10. After finishing the wizard, start installing the driver. When the installation is initiated, the following dialog shows up. Click “Yes (Y)”.



4-11. Open the “Control panel” and choose “Printers”. Make sure the BL2-58 driver is installed.



## 5. Printer Property

5-1. Type of printer driver  
"SANEI BL2-58"

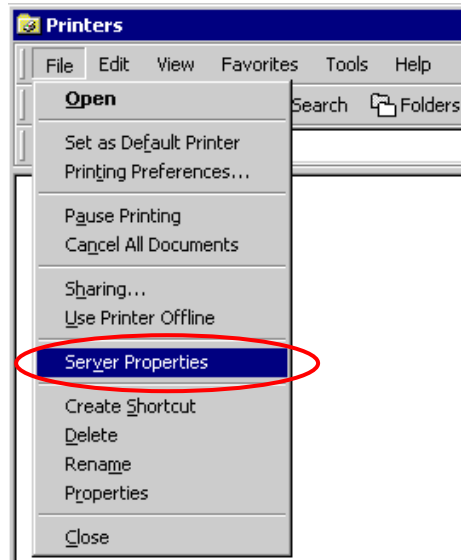
5-2. Choice of paper size

Choose the right paper size through "Property".

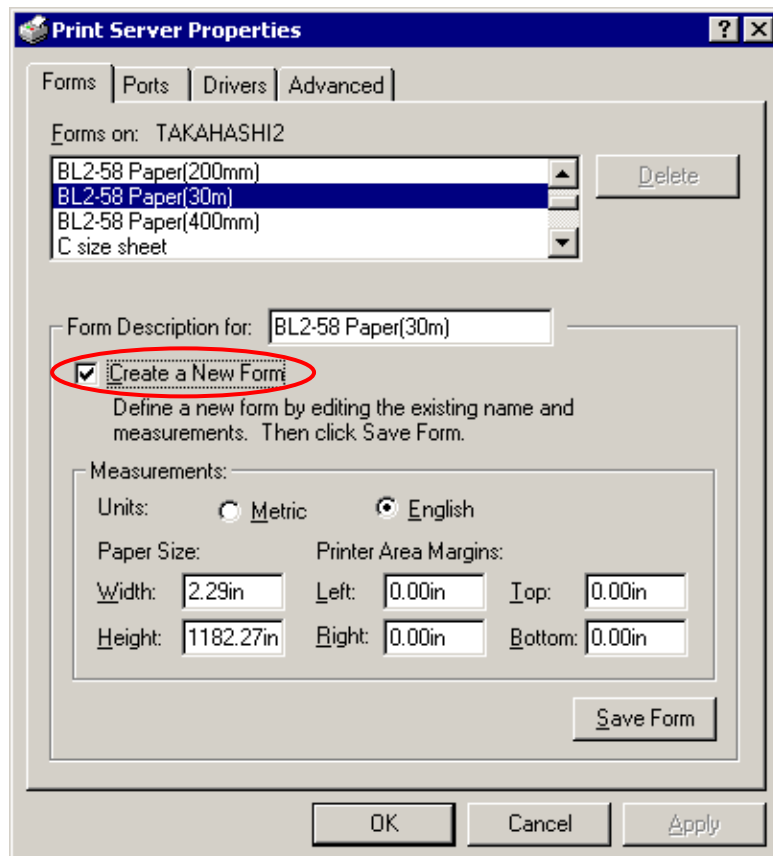
If there is no proper paper size listed in it, make the new paper size.

<How to make new paper size>>

5-2-1. Choose the "Server Properties" in the dialog of "printer & FAX".

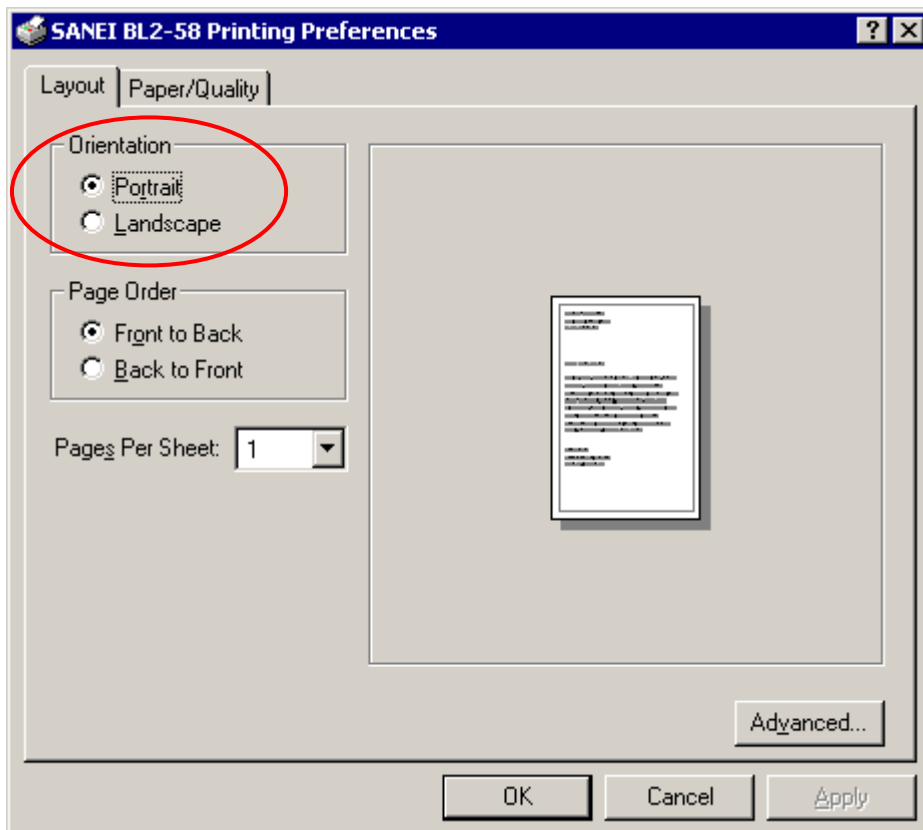
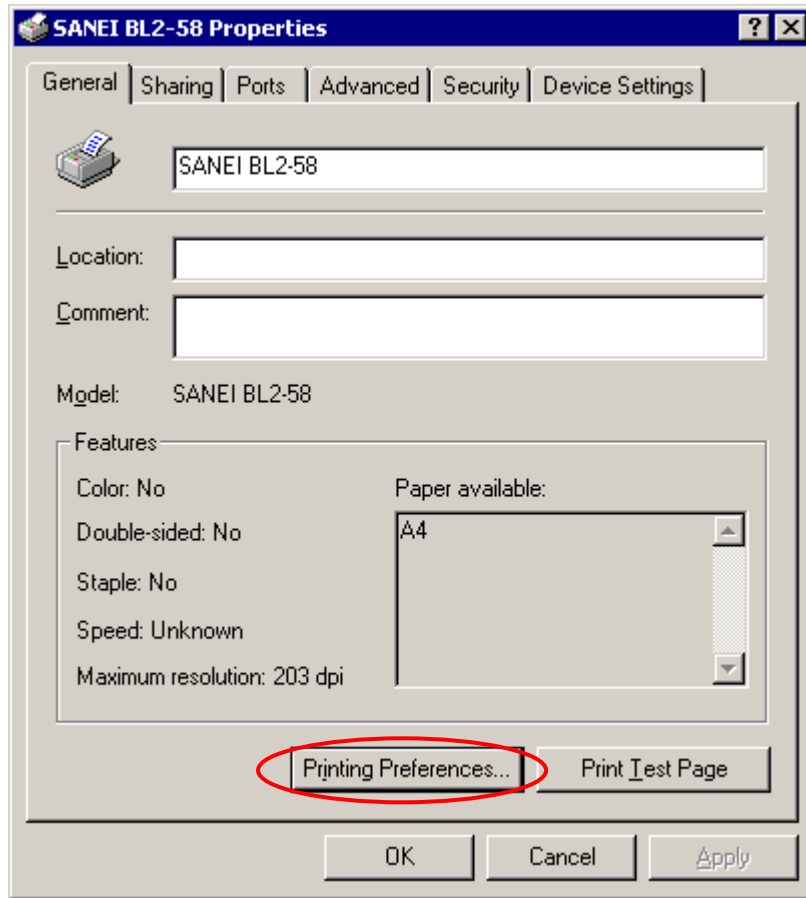


5-2-2. Check the "Create a New Form" and create the right paper size.  
Input the data of paper width correctly.

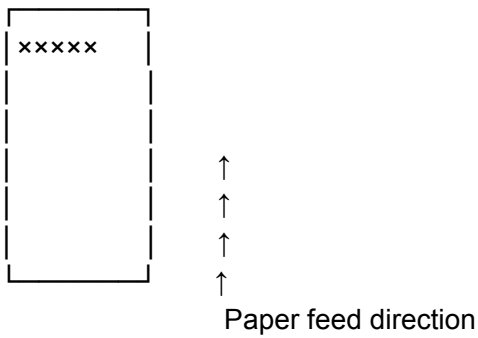


### 5-3. Orientation of printing

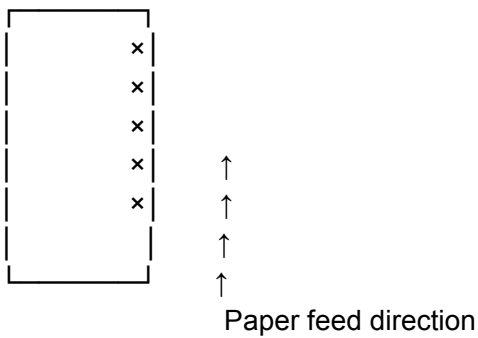
The printer is able to orientate either vertical (landscape) or horizontal (portrait).  
But the setting in Windows application takes precedence over the setting in property.



- Portrait  
Print characters horizontally against the paper feed direction.

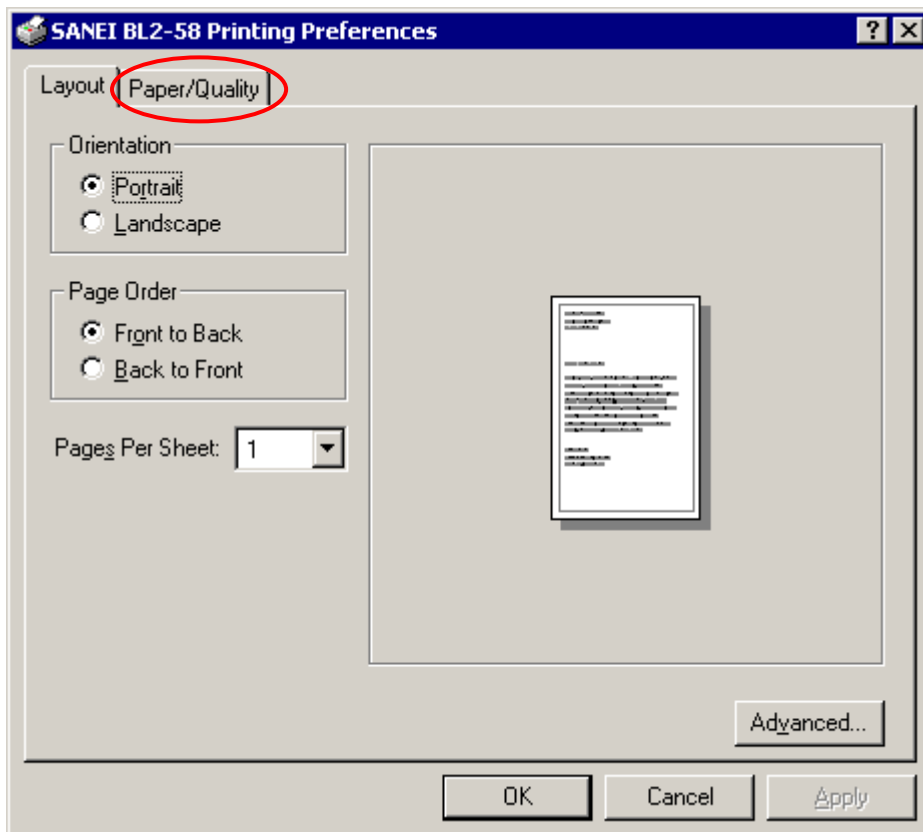


- Landscape  
Print characters vertically against the paper feed direction.

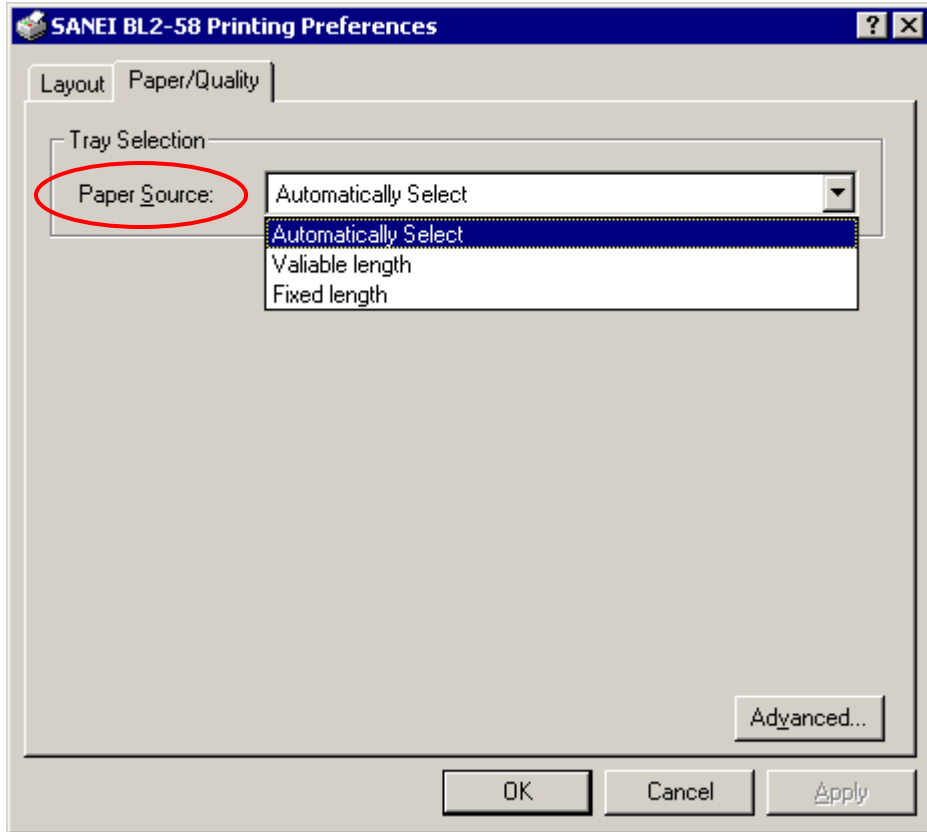


#### 5-4. Paper source

The paper source can be chosen along to the following dialog.  
Choose the "Paper/Quality".



Select paper source



- Variable length  
Print all data on the paper, therefore the paper size is varied by the volume of printing data.
- Fixed length  
Print data on the specified paper size, therefore the paper length is fixed.
- Automatically select  
Depending on the selecting paper size, variable or fixed length is automatically set.

Note) About paper size

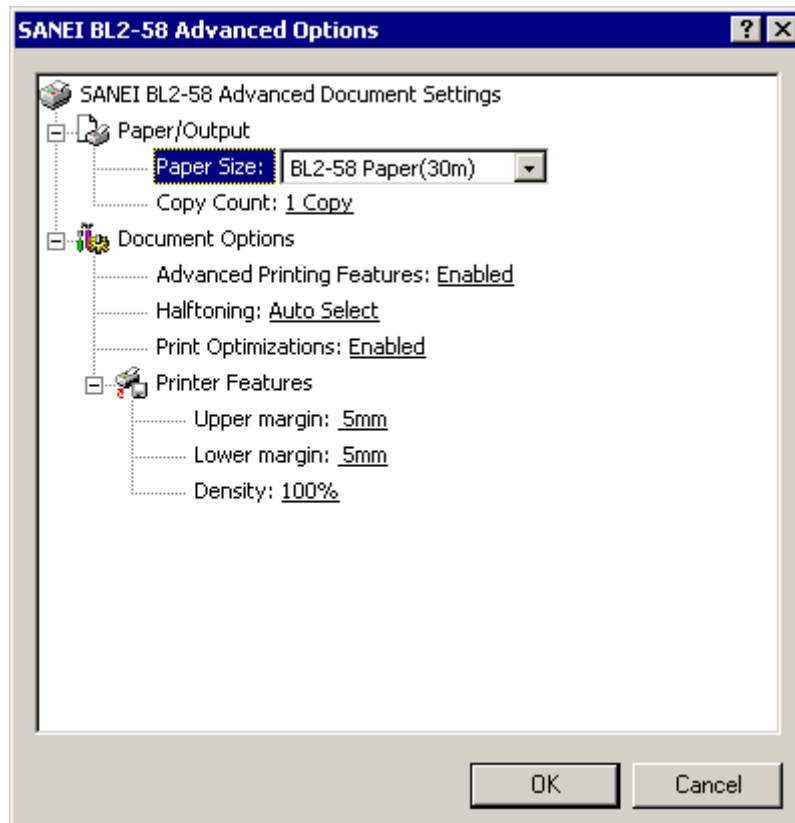
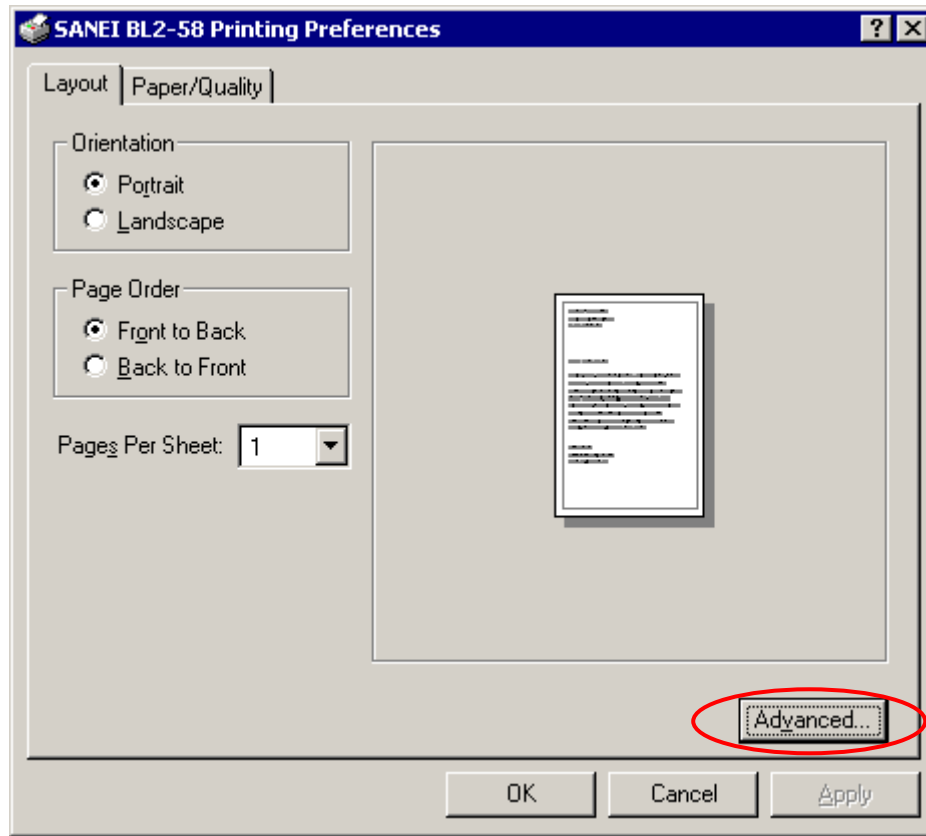
There is the restriction for paper source by size as follows.

Paper size	Source
• BL2-58 (30m)	Variable only
• BL2-58 (200mm)	Variable /Fixed
• BL2-58 (400mm)	Variable /Fixed

\* If there is the discrepancy for setting the paper, the display shows “warning “ and it is automatically fixed.

5-5. Detail setting

Choose the “Advanced” from below dialog.



- Paper Size  
Choose the registered paper size.  
For the new paper size, refer to 5-2.Choice of paper size”.
- Upper margin  
The upper margin is set at 0mm, 5mm, 10mm, 15mm, 20mm before starting print on every pages. Default value is 5mm.
- Lower margin  
The lower margin is set at 0mm , 5mm , 10mm , 15mm , 20mm after finishing print on every pages. Default value is 5mm.
- Density  
Select the printing density from 60% , 80% , 100% , 120% , 140% , 160% , 180% & 200%.  
Default value is 100%.  
\* The density equal or larger than 160% is prepared for unspecified special papers.  
However we recommend customers to choose the density less than 160% because of reducing the life of the thermal head.

END